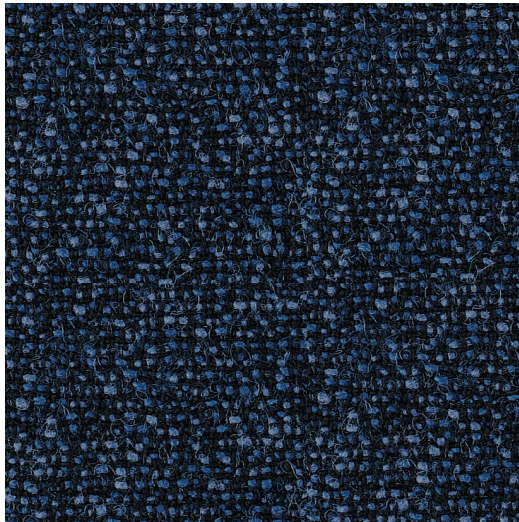


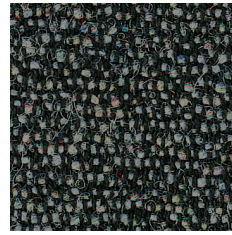


# 24/7

## FABRICS AND COLOURS



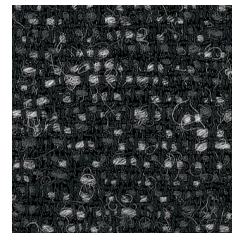
24/7+ WK003



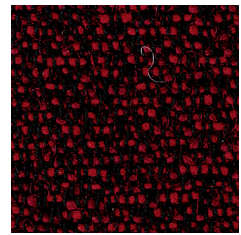
24/7+ WK002



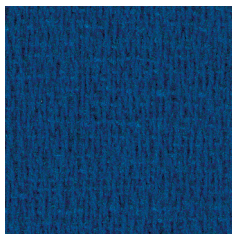
24/7+ WK018



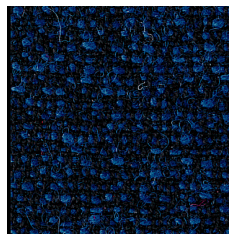
24/7+ WK025



24/7+ WK008



24/7+ WK013



24/7+ WK001



24/7+ WK021

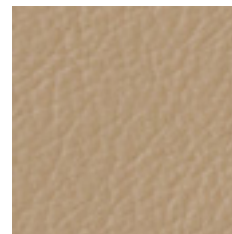


24/7+ WK017

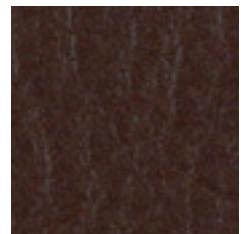
### Standard delivery time



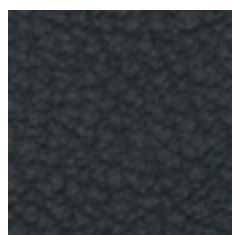
24/7+ WK012



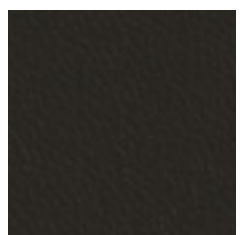
Antigo Soft ATG56006



Antigo Soft ATG55130



Antigo Soft ATG55185



Antigo Soft ATG56100

# 24/7

## FABRICS AND COLOURS

### Technical specifications

	24/7+ by Camira	ANTIGO SOFT by Wollsdorf
	(WK)	(ATG)
<b>COMPOSITION</b>		
Pure New Wool	33	-
Polyamide	50	-
Visil	10	-
Viscose	7	-
Cow leather (semi-aniline)	-	100
<b>ECO-LABEL</b>		
ISO 14001 certified	◆	◆
ECO <sub>2</sub>	-	◆
Blue Angel RAL-U2 148	-	◆
Chromefree leather tanning	-	◆
<b>FASTNESS TO RUBBING</b>		
Dry	4	1000/4
Wet	4	80/4

	24/7+ by Camira	ANTIGO SOFT by Wollsdorf
	(WK)	(ATG)
<b>FLAMMABILITY</b>		
BS EN 1021 – 1, ISO 8191 – 1 (cigarette)	◆	◆
BS EN 1021 – 2, ISO 8191 – 2 (match)	◆	◆
BS 7176: Low Hazard	◆	-
BS 7176: Medium Hazard	◆	-
UNI 9175 Classe 1 IM	◆	-
BS 5852 P 2 crib 5	-	◆
BS 5852 Section 4 Crib 5	◆	-
California 117	◆	-
IMO A.652 (16)	-	◆
<b>OTHER</b>		
Weight (g/lin.m.+5%)	609	-
Width	140	-
Abrasion (Martindale)	500 000	-
Light fastness	6	6

#### MAINTENANCE

To be vacuumed with a furniture brush or wiped with a clean, white cloth or sponge slightly dampened with clean lukewarm water.  
For Antigo Soft, use leather care products.

#### FABRIC GUARANTEE

From 01.01.2010 RH offer a 10 year guarantee on all upholstery in our standard fabric and leather collections against material defects and manufacturing faults from date of production. The guarantee is valid for chairs subjected to normal use, defined as any regular working place and for a maximum of 9 hours per day. For 24/7 use RH offer a 5 year guarantee on Antigo Soft leather and 24/7+ fabric. The guarantee covers all necessary replacement parts for repair. Labour and transportation costs are excluded. Normal wear and tear must be expected and is not covered by the guarantee.

#### NOTE

- Batch to batch variations in shade may occur within commercial tolerance.
- Flammability performance is dependent on foam used.
- We reserve the right to alter technical specifications without notice.

#### Head office

Scandinavian Business Seating AS  
Fridtjof Nansens vei 12  
P.O.Box 5055 Majorstuen  
NO-0301 Oslo, Norway  
Tel +47 22 59 59 00  
Fax +47 22 59 59 59  
www.sbseating.com

#### Production

Vallgatan 1  
Box 294  
SE-571 23 Nässjö, Sweden  
Tel +46 380-55 53 00  
Fax +46 380-182 85  
www.rhchairs.com

