



Instruction Manual

Edition 2015:1
Original instructions

Winch

We -1400 / We-1700 / We-2200

English Version

Ladda ner instruktioner / Download instructions
Download-Anweisungen / Lataa ohjeet
www.weimer.biz/instr



Weimer Skogsteknik & Hydraulik ab
www.weimer.se & www.weimerforest.com

EC Declaration of Conformity

In accordance with EU Machinery Directive 2006/42/EG (AFS 2008:3)

We, Weimer Skogsteknik & Hydraulik ab, Råskog, 575 91 Eksjö, hereby declares that
hydraulic winch :

Model: We-1400 / We-1700 / We-2200

to which this declaration relates is in conformity with the Machinery Directive 2006/42/EG



Urban Johansson
Managing Director
Weimer Skogsteknik & Hydraulik ab

Delivery year 2017

Content

EU-Konformitätserklärung.....	2
Introduction	3
Warranty 2014	3
Winch and components	4
Technical specification	4
Safety information	5
Operating instructions	5
Maintenance and service	5
Mounting	6

Introduction

The hydraulic winch We-1400, We-1700, We-2200 M3 is assembled on a crane. The winch is controlled with a control lever on the carriage and by radio. We thank you for the purchase of this hydraulic winch and hope that you will be fully satisfied with the product.

Manufacturer: Weimer Skogsteknik & Hydraulik ab
Råskog
575 91 Eksjö
Phone: +46 381 710 10
E-mail: info@weimer.se
Website: www.weimer.se and www.weimerforest.com

This manual contains guidelines for your maintenance of the hydraulic winch. Read this manual and assure that you have understood the principle of operation of the product before operating the winch. The manual describes the assembly, maintenance and servicing of the device. Follow this manual to ensure reliable and faultless operation together with continuance of validity of the manufacturer's guarantee. For extensive maintenance or repair works contact your retailer or Weimer Skogsteknik & Hydraulik. Weimer reserve the right to make changes without notice. Good luck with your new hydraulic winch from Weimer.

Warranty 2014

Weimer Skogsteknik & Hydraulik's own manufactured forest products have two years warranty. Products that derive from third-party vendor has one year warranty, such as motor, valve and radio unit. The warranty covers only the initial errors, i.e. errors that existed in the product upon delivery, and is valid from delivery date. Warranty does not cover handling errors, bad luck injuries or if the product is used under abnormal circumstances such as usage of impure oils or high heat conditions.

If any product should break during normal use, contact Weimer Skogsteknik & Hydraulik first and thereafter send back the defective goods. If we find defects in materials or workmanship, we will repair the goods or send you a new product. If necessary, the product will be returned to third-party manufacturer for warranty processing. Warranty claims are not accepted on assembly, disassembly, repairs at other workshop, consequential damages caused by the defective product, machine downtime and lost production. The warranty is not valid if the product has been modified so that it deviates from its original version e.g. by modification, settings, add-construction or replacement of parts not supplied by Weimer.

For warranty return, the product type, production number for manufactured goods, delivery date and the name and address of purchaser should be included in the shipment.

Winch and components

Check the delivery before assembly so that all parts are available.

Winch excl. hose and valve	Winch with manual valve	Winch with radio control
Winch part	Winch part	Winch part
Mounting iron with brackets	Mounting iron with brackets	Mounting iron with brackets
Wire 6 mm & 40 meter alt. 8 mm & 35 meter	Wire 6 mm & 40 meter alt. 8 mm & 35 meter	Wire 6 mm & 40 meter alt. 8 mm & 35 meter
Snatch block	Snatch block	Snatch block
	2 pcs 3/8" hose	2 pcs 3/8" hose
	Manual valve	Electric valve
	Couplings and a plate	Couplings and a plate
	2 pcs 1/2" hose	3 pcs 1/2" hose
		Radio unit

Technical specification

	We-1400	We-1700	We-2200
Pulling force at 175 bar	1 400 kp	1 700 kp	2 200 kp
Wire speed at flow 40L/min	0,45 m/sec	0,36 m/sec	0,29 m/sec
Wire with hook / length	6 mm / 40 m	8 mm / 35 m	8 mm / 35 m
Weight winch	45 kg	45 kg	45 kg

Safety information



- Read the instruction manual before operating the winch.
- Risk zone of winching is 50 meters. Before and during the work, ensure that no unauthorized person is in the risk zone and ensure good visibility over the entire operating range.
- Consider the risk of overturning at all winching. For increased stability, use the support legs and position the crane appropriately. Stand at a safe distance if the carriage would topple over.
- Check every workday that the wire is intact. If snatch block, wire or hook deficiencies, it will be thrown out with great force. Be sure to keep a safe distance.
- Connect the wire near the log's end for safer winching.
- Do not use the winch for tree felling, towing or lifting.
- Make sure you know how to switch off the winch and tractor quickly in an emergency situation.

Operating instructions

Follow the instructions for installation and make sure everything is connected correctly. Start the oil flow and move the lever/levers from the valve until the motor starts spinning. Check that the motor connects and disconnects satisfactory. For radio control, start the transmitter by pressing and holding the ON button for a few seconds. Test drive by pressing IN and OUT a few times. If the winching direction does not match IN/OUT buttons, switch the cables on the valve and test drive again.

Maintenance and service

Check regularly that

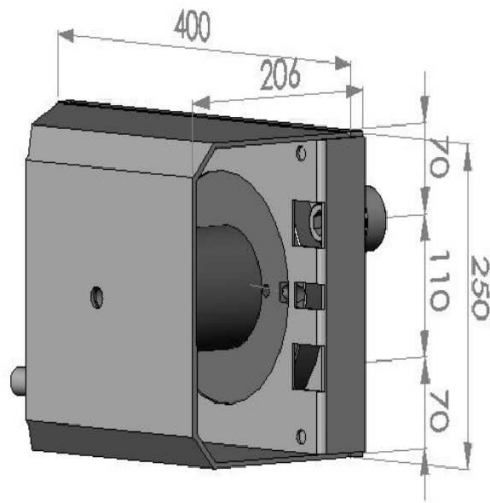
- all screws and nuts are tight.
- the wire is intact and free of rust. Replace or lubricate the wire if damaged or rusty.
- the hydraulic system is tight and not leaking.
- the hoses are intact and there is no oil leaks.
- the electric cables are undamaged and connectors are OK.

Lubrication instructions

- Lubricate motor bracket and the wire wheel every 8 hours. It is better to lubricate frequently rather than use large amounts of lubricant at a single time. Change damaged lubrication nipples.
- If winching in or out is difficult, spray some lubricant behind the drum.
- After lubricate the wire when necessary.

Use hydraulic oil 46 or synthetic environmentally approved oils. Vegetable oil is not recommended since it contributes to abnormally high wear and can cause problems with the valves.

Mounting



Dimension and attachment points.



- Hold the fixture on the boom side plate.
- Put the winch as far forward as possible in height or below the top of the boom, see dimension drawing above.
- Mark and grind clean of paint.
- Measure and weld.
- It is very important that the brackets and wire wheel attachment are in line; if not build up with plates.
- Weld the wire wheel attachment on the boom plates as far as possible from the winch.
- Mount the winch in place.



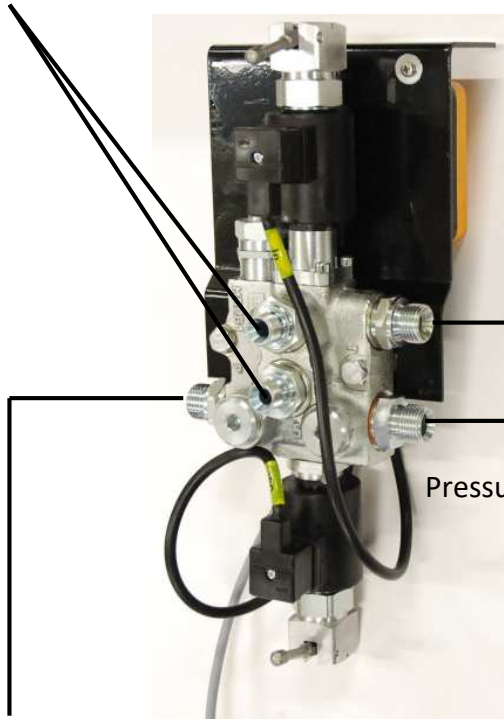


- Start by rolling up the wire, this is very important.
- Assemble the wire in the drum. Ensure that the wire goes into the correct side of the drum.
- Lubricate the wire during rewinding.



Weld the bracket to the valve plate in an appropriate location and check that hose, valve and radio device are protected and functional. Assemble the hydraulic hoses as below image:

To the winch,
3/8" hose 90°-45°

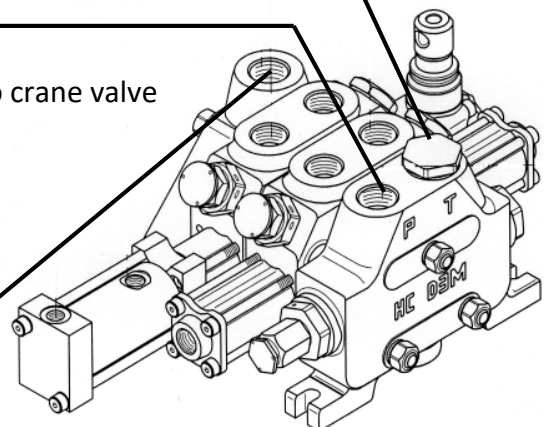


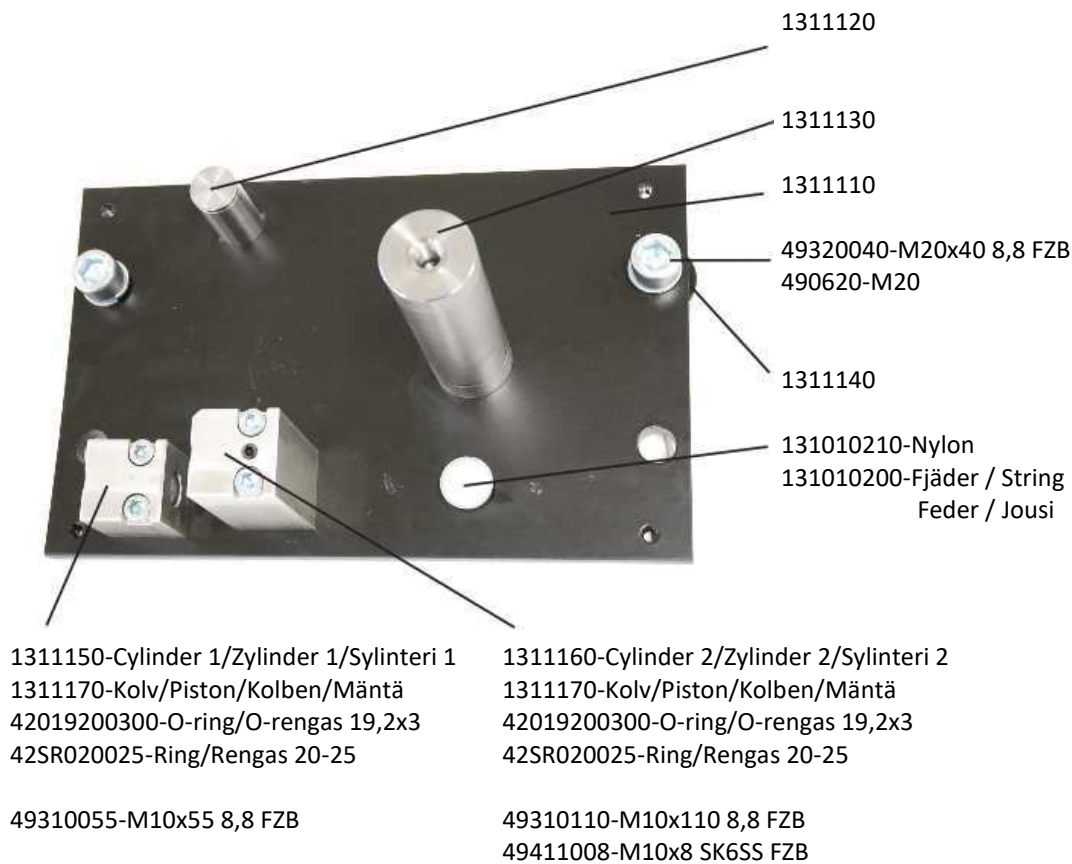
Return from winch valve,
1/2" hose 90°-IR with adapt

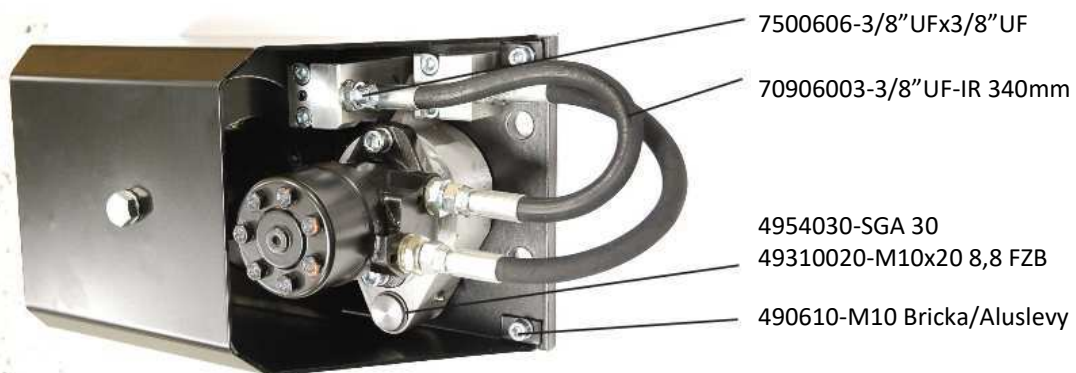
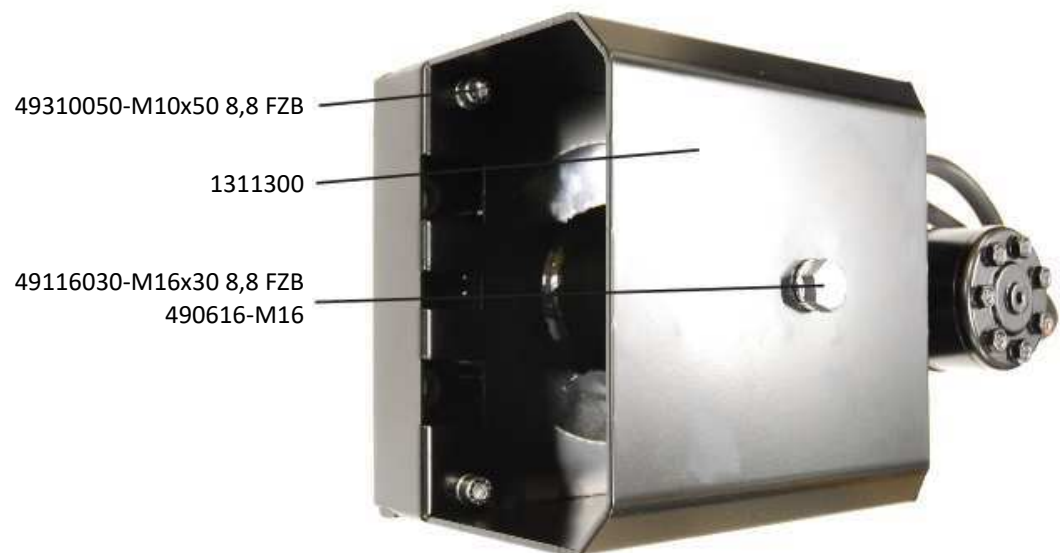
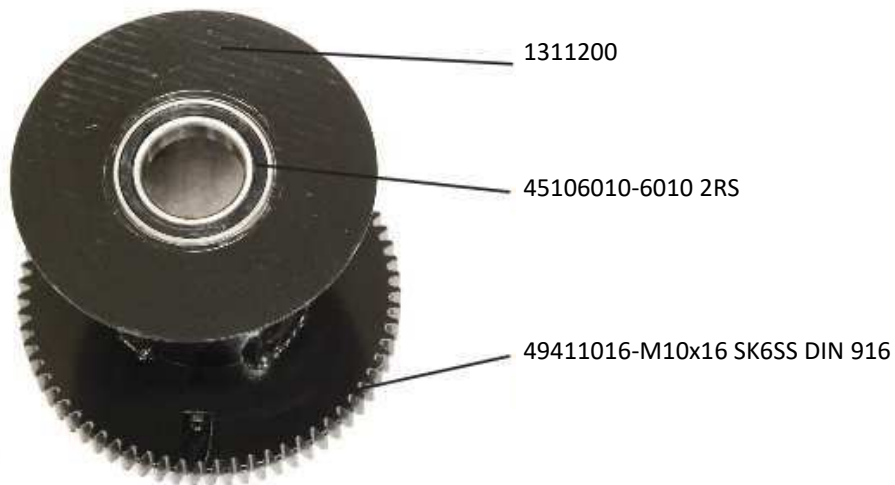
Pressure to crane valve

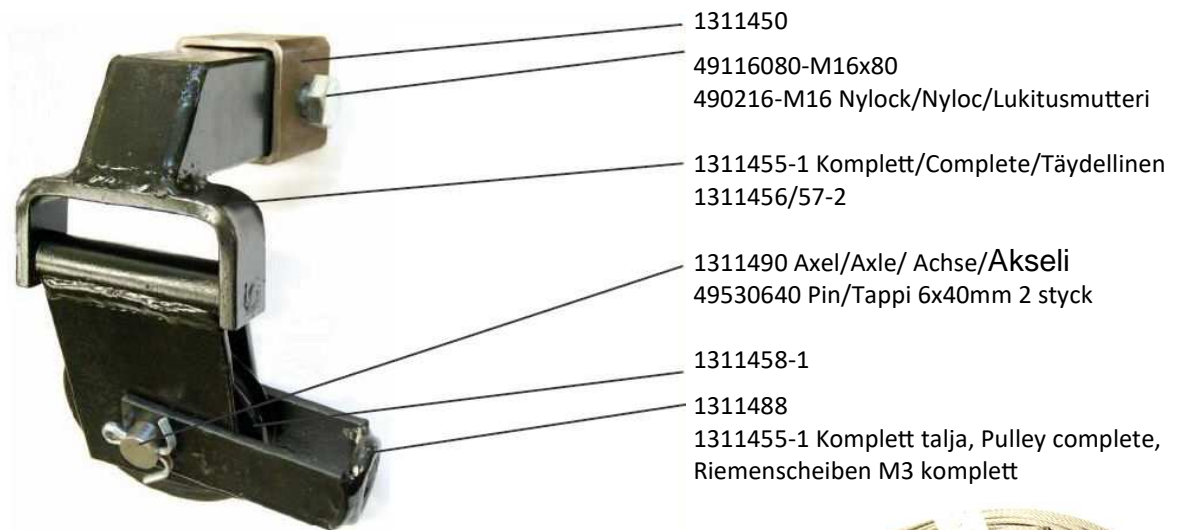
Pressure from tractor,
1/2" hose 90°-UF with quick
coupling

Return to the tractor

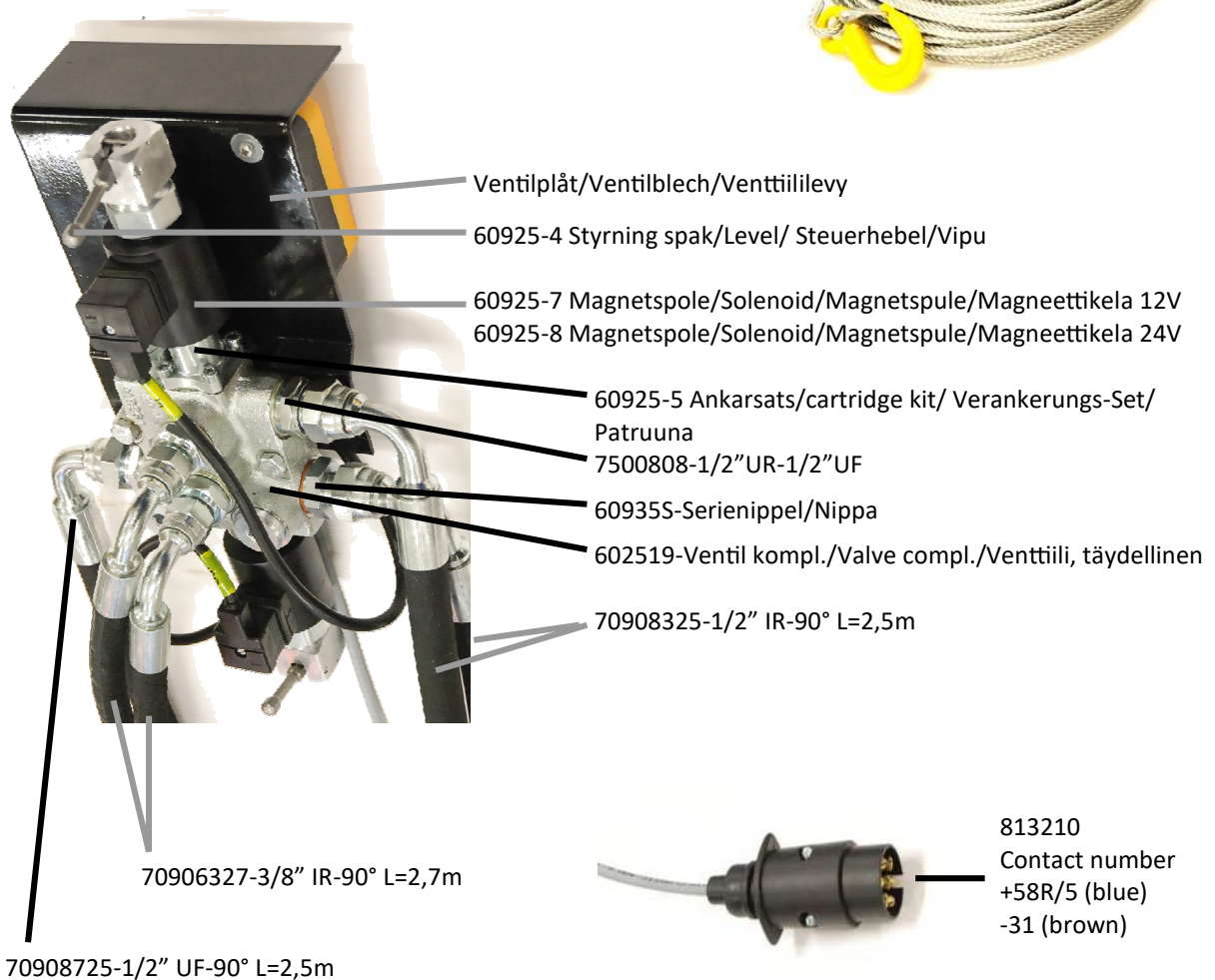


Reservdelar/Spare parts/Ersatzteile/Varaosat





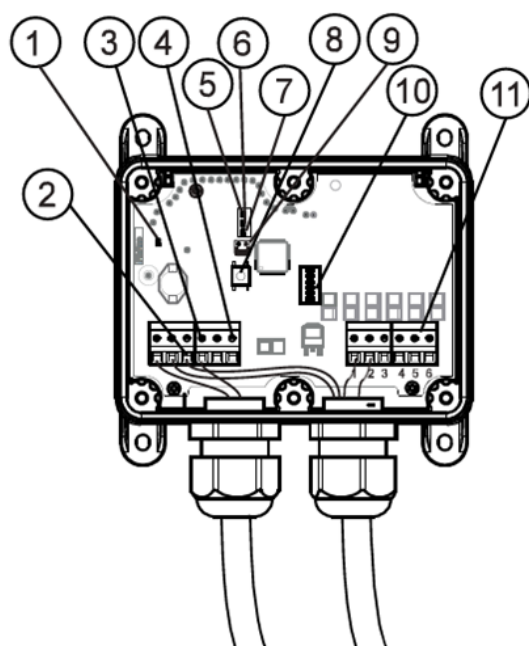
Vajer kompl./Wire compl./Seil kompl./Vaijeri, täydellinen
We-1400 131010900 6mm x 40m
We-1700/2200 131010910 8mm x 35m





82310 Radio kompl./compl./kompl./täydellinen 2k Åkerströms
82310-1 Radiosändare / Radio transmitter

Description of the Receiver



Sesam 800 RXM 12/24 V DC to winch with cable installed. The models indicators, connections and jumper.

1. Power LED
2. Ground, 0V (-)
3. 12/24 V DC power
- Fuse with 3A blad fuse near the battery
4. Internal supply to the outputs (see chap. 8.1)
- 5-7. Status LEDs
8. Learn/Erase knapp
9. Jumper J1
10. Output LEDs
11. Output connections 1-6

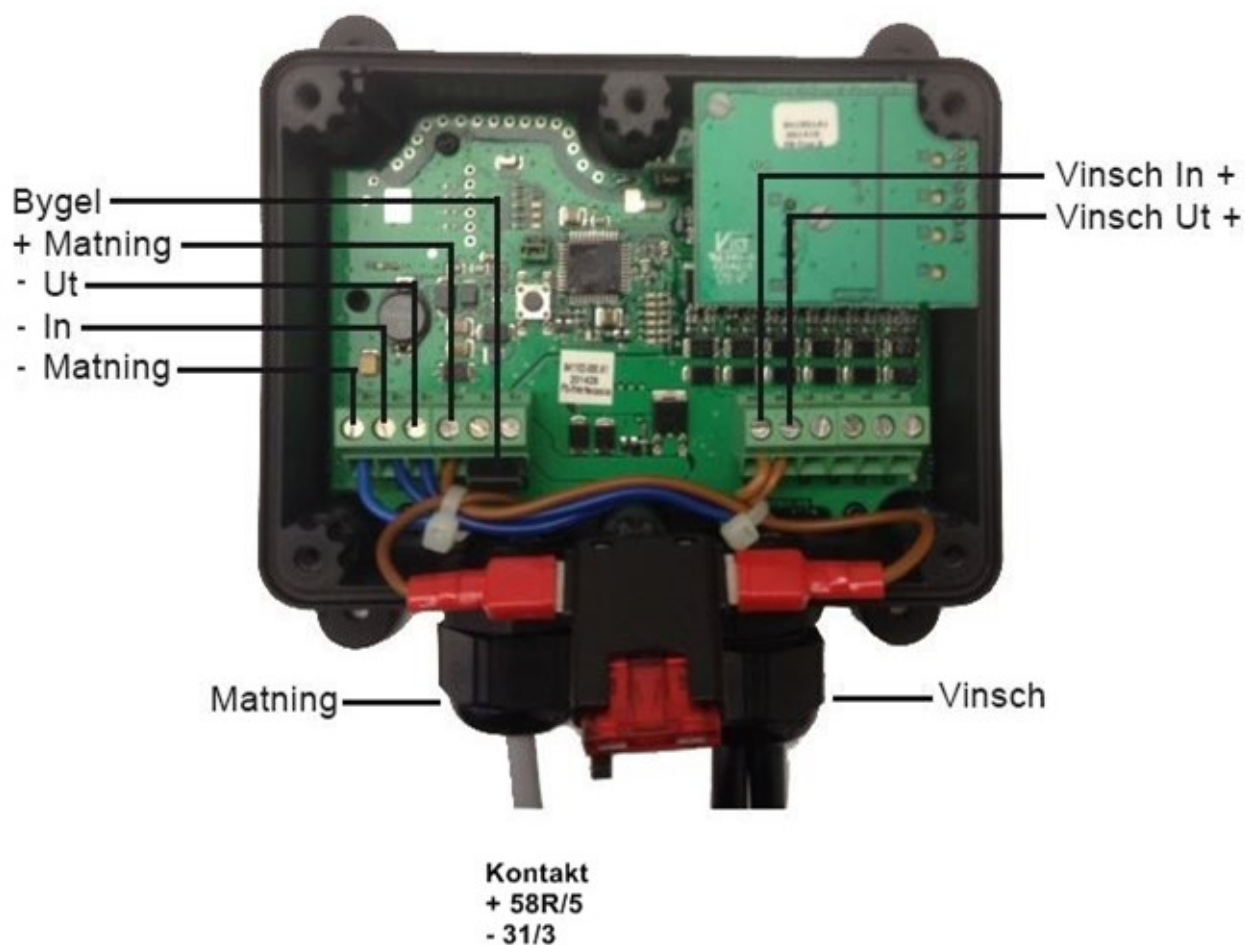


Fig 2

Indicators on the Receiver

Led Indicators

The receiver has LED indicators that indicates different parameters (see fig. 1 for positions of the LEDs).

The indications on the LEDs are as follows:

Power LED (see "1" in fig. 1)

Indicates whenever the receiver is powered.

LED 5 Squelch (see "5" in fig. 1)

Indicates a detected signal on the operating frequency band.

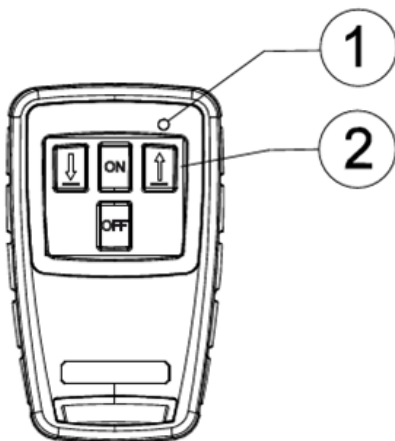
LED 6 Status (see "6" in fig. 1)

Indicates that information from a transmitter paired with the receiver has been received.

LED 7 Learn (see "7" in fig. 1)

Indicates if the transmitter is in "Learn" Mode.

Sesam 800 M4 4 button transmitter



Sesam 800 M4 transmitter indication and buttons.

1. Status LED
2. Button 1-4

Fig 3

Indications on the Transmitter

The transmitters are equipped with a status LED indicating the status of the transmission during operation (see fig. 3).

Normal operation

Quick flashing RED LED = Output is not activated and there is no feedback from the receiver.

Quick flashing RED then a continuous GREEN LED = Output is activated in the receiver with feedback.

Battery Warning

Continuous RED LED after activating a command = Low battery

3 long RED LED flashes = Battery depleted, transmitter cannot send commands.

Operation

Activating the Transmitter

The transmitter is delivered with the batteries not installed. Insert the batteries according to chapter "Replacing Batteries".

Activate the transmitter by pushing the start button "ON" for 3 seconds. The transmitter indicator will flash GREEN quickly during startup and then flashing GREEN slowly when contact with the receiver is enabled. The transmitter is now enable to control the winch.

Deactivating the Transmitter

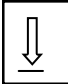
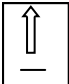
To prevent unintended activation the transmitter shall be turned off when not used.

Turn off the transmitter by pushing button "OFF" for three seconds, the indicator flashes a couple of quick RED to finish with a long RED. The transmitter is now turned off. If you forget to turn off the transmitter it will shut itself off after a time, idle-time (non-use).

Controlling the Device

The winch is controlled via the buttons on the transmitter.

The relationship between buttons and outputs are:

- Button 1  Winch 1 "IN"
- Button 2 "ON" function (3 sec.)
- * Button 3  Winch 1 "OUT"

Learning of Transmitter

If any part of the system has been replaced, the receiver and transmitter will need to be paired together.

- Dismount the cover of the receiver by remove the plastic caps to reach the screws.
- Press the button "ON" on the transmitter until the green indicator lights. The transmitter is now active.
- Press the Learn/Erase button on the receiver until LED 7 is ON.
- The Learn Mode will be active for 10 seconds (as long as LED 7 is ON).
- Press transmitter button 1 "IN" to pair the transmitter to the receiver.
- LED 7 blinks three times if the learning has succeeded.
- Install the receiver cover and tighten the six screws to 2.0 Nm
- Mount the caps over the screws.

Replacing Batteries

If the indication LED on the transmitter indicates low battery power, replace the batteries promptly. Before changing the batteries note that changing of batteries must take place in a clean environment free from static electricity.

The batteries are changed as follows:

1. Open the battery cover by unscrewing the 6 outer screws on the rear side of the transmitter housing.
2. Carefully remove the cover by lifting up the top of the battery cover.
3. Remove the used batteries and insert new batteries.
4. Close the cover by first inserting the rear of the cover into the transmitter and then push the top back down.
5. Tighten the 6 screws (torque 1,0 Nm).

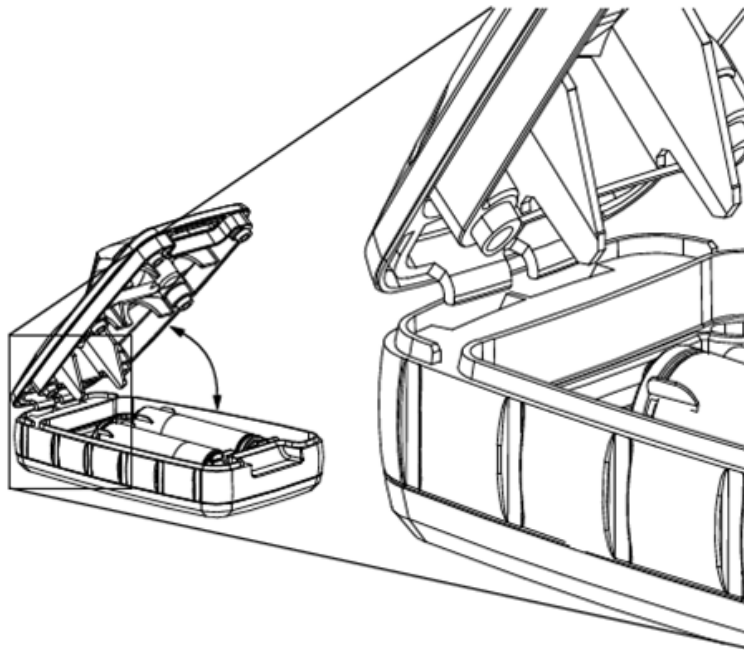


Fig 4