



**Winter i\*cept iZ 2**

*Drive with confidence in extreme winter conditions*



reddot award 2016  
winner



# Contents

---

**Design concept**

**Features and performance information**

**Key performance**

**Key benefits**

**Design features and technology**

**Technical presentation**

**Available sizes**





# Optimised directional pattern design for maximum studless safety even in the harshest winter conditions.



**Sharp 3D block edge**  
For icy and snowy roads



**'Z' Grip shoulder block**  
For snow handling



**Aqua edge grooves**  
For wet and slush handling

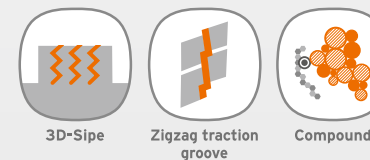




## Winter i\*cept iZ<sup>2</sup>



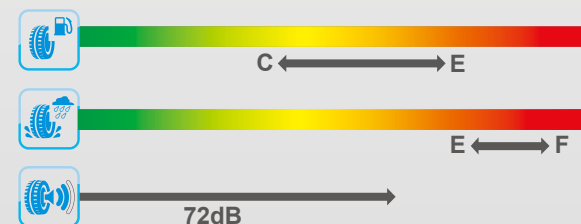
### Technology icon



### Performance icon



### EU label



### Technical profile

Speed symbol : T  
Tread width : 155~255  
Series : 35~70  
Rim diameter : 13~19

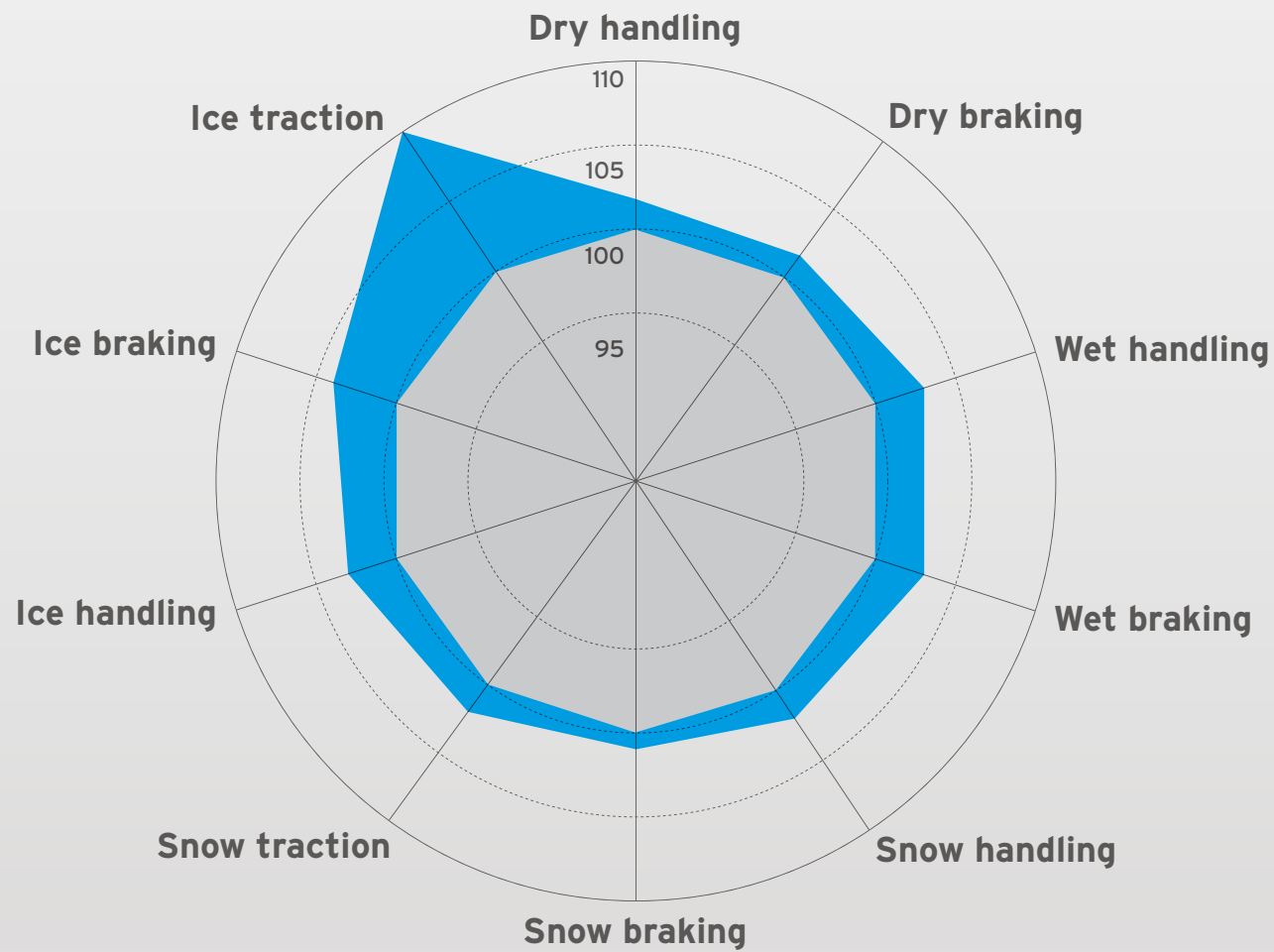


## Key performance

Drive with confidence in extreme winter conditions

Improved performance compared to predecessor.

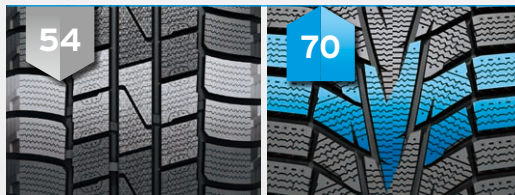
■ Conventional  
■ **Winter i<sup>\*</sup>cept iZ<sup>2</sup>**





# Optimised pattern design for improved ice and snow performance.

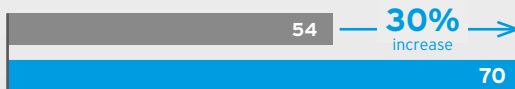
## Increased pitch numbers



Conventional

Winter i\*cept iZ²

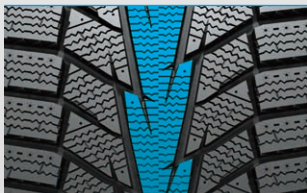
### Pitch numbers



■ Conventional ■ Winter i\*cept iZ²

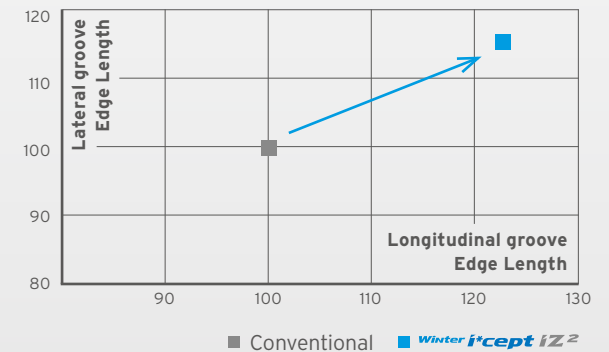
Bites into the snow improving the traction performance of the tyres.

## Handling performance



Reinforced centre block provides better handling performance (reinforcement of rib block stiffness).

## Increased groove edge length

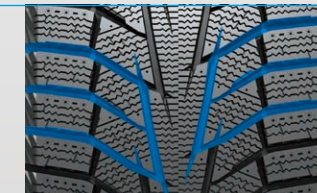


■ Conventional ■ Winter i\*cept iZ²

Maximises the effect of the sipe edge.

- Lateral groove edge length: 15% increased
- Longitudinal groove edge length: 23% increased

## Wet performance



V-shape offers better drainage.



# Ice and snow performance

## A Grip claw technology

Improves ice & snow traction by applying sharp 3D edge.



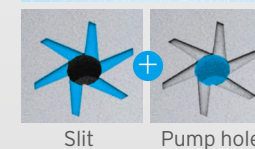
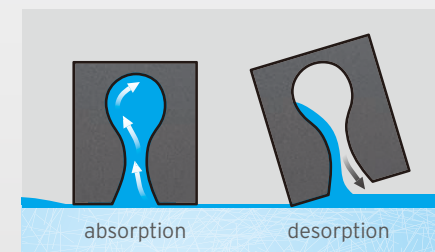
## B Ice-grip slits

Angled sharp-edge slits improve braking grip in ice and snow.



## C Multi spuit system (spuit hole and slit)

- Spuit hole: Prevents slipping on slush by absorbing water.
- Slit: Improved grip in the snow.





# Ice and snow performance

## D 'Z' Grip shoulder block

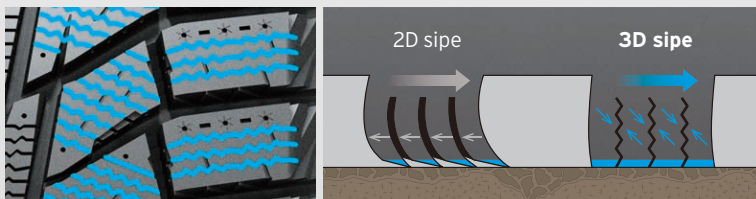
The 'Z' grip shoulder block disperses pressure equally on the shoulders edges.



→ Z Grip: Z shape 3D structure equally distributes the pressure, making the ideal contact shape. The robust block edge enhances the handling performance on the snow.

## E 3D sipe

The 3D sipe block provides superior control stability and minimises block movement in all driving conditions.





## Snow and wet performance

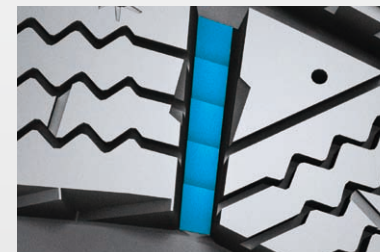
### F Spiral boosters

Efficient structure drains snow and water, ensuring maximised ice braking and enhanced acceleration.



### G Grip in step

Prevents snow accumulating while braking or accelerating on ice.



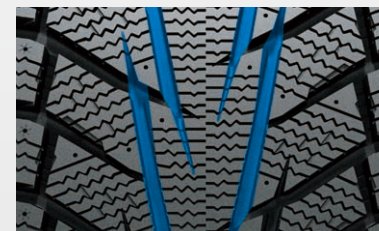


## Wet performance



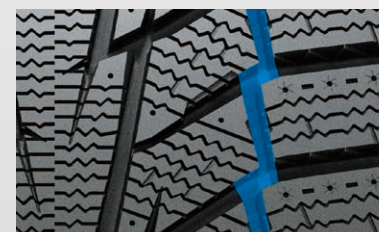
### **H** Aqua edge grooves

Directional V-shape design prevents hydro-planing by pushing water out effectively.



### **I** Zigzag traction

Improves snow traction and provides excellent braking and handling performance on ice.

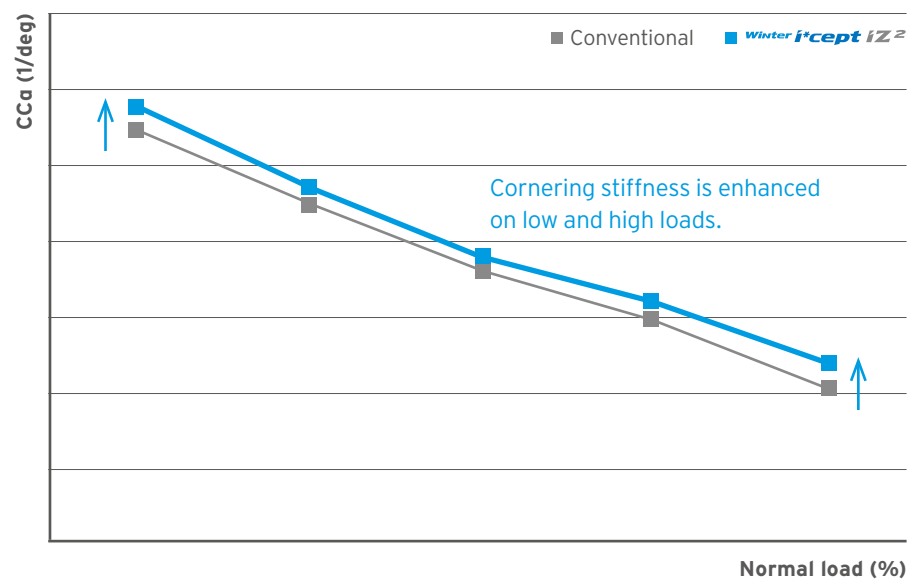




# Dry handling performance

Reinforced sidewall and bead section improves cornering grip and handling performance.

## Cornering stiffness coefficient



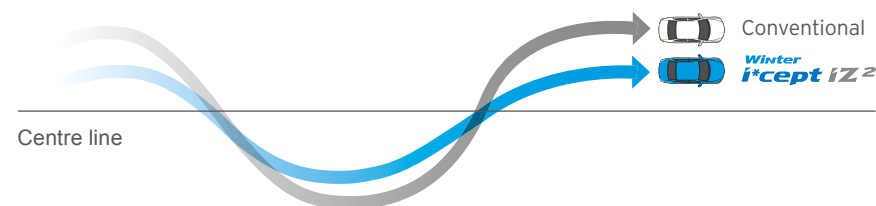
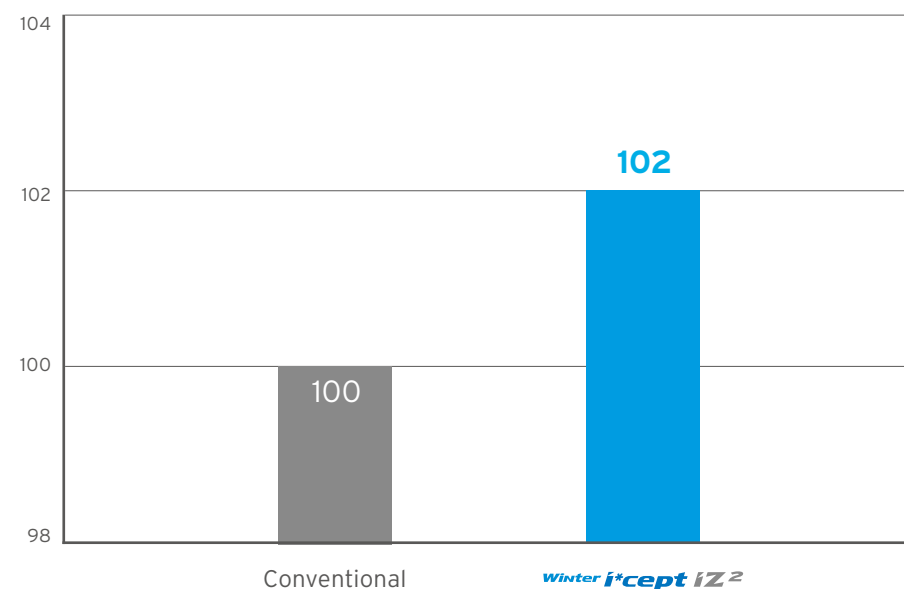
## Technical factor

- Reinforced sidewall and bead section.

## Results

- Direct steering response.
- Improved cornering stiffness.
- Improved steering accuracy and dry handling performance.

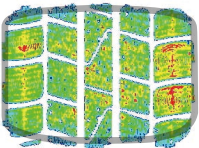
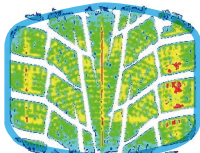
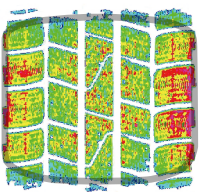
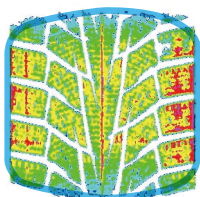
## Dry handling





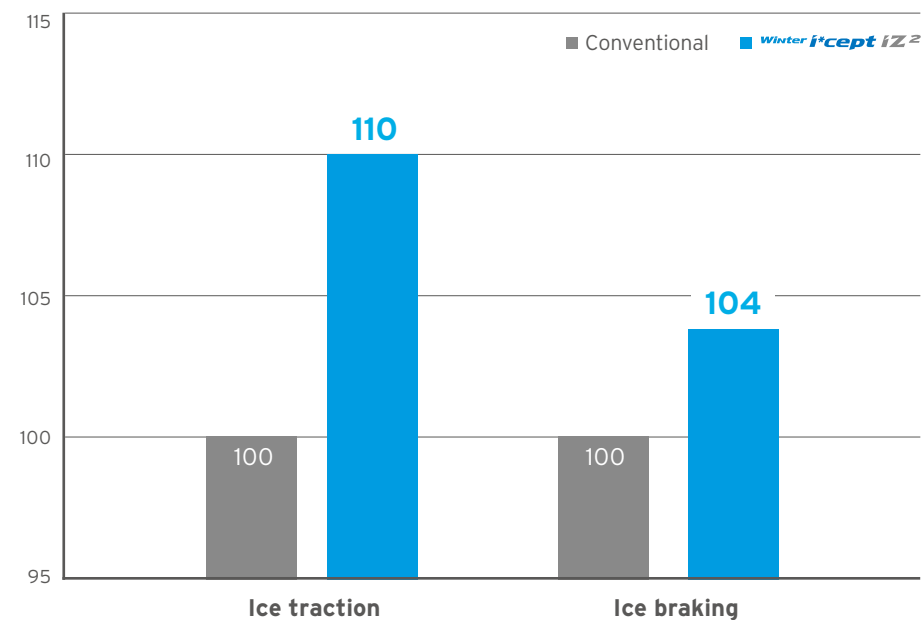
# Footshape

## Footshape

	Conventional	Winter <i>i*cept</i> iZ <sup>2</sup>
Traction		
Contact point	100%	103%
Braking		
Contact point	100%	103%

- Footprint pressure is equally applied compared with conventional tyres.
- This increases the braking and traction performance on icy roads.

## Performance





# Compound

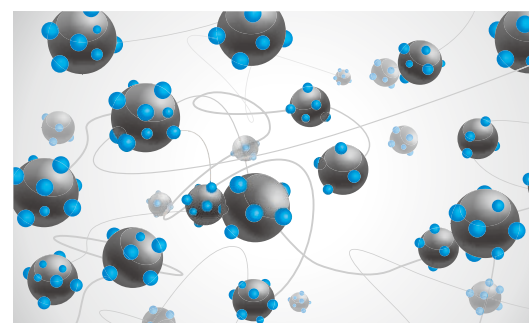
## Ice-philic technology



### Better grip on icy and snowy roads

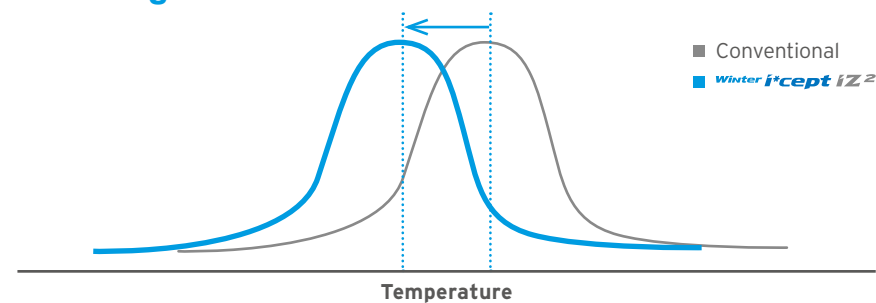
Optimised soft compound maximizes contact area.

## Silica distribution



Silica particles are evenly distributed to prevent the rubber compound becoming stiff in cold conditions.

## Lower Tg control



Tg compound improves braking performance and provides better grip in the snow by increasing the contact area.

\* Tg : Glass Transition Temperature



# Tyre structure

## High grip silica compound

Improved snow / wet traction and lowered rolling resistance.

## Jointless full cover reinforced belt

Ideal tread strength.

## Wide steel belt layer

Ensures optimal tread stiffness and improves handling performance.

## Equilibrium polyester carcass line

Enhanced sidewall stiffness and durability.



## Adoption of high-hardness bead filler

Improves handling and steering response.

## Ultra high strength bead wire

Improves uniformity and durability of the bead position.

Inch	Series	Size	LI	SS	RR	Wet	PBN	Wave
13	70	175/70R13T	82	T				
14	60	185/60R14T XL	86	T				
	65	155/65R14T	75	T				
		175/65R14T XL	86	T				
		185/65R14T XL	90	T				
	70	175/70R14T XL	88	T				
		185/70R14T XL	92	T				
		195/70R14T	91	T				
15	55	185/55R15T XL	86	T				
		195/55R15T XL	89	T				
	60	185/60R15T XL	88	T				
		195/60R15T XL	92	T				
	65	175/65R15T XL	88	T				
		185/65R15T XL	92	T				
		195/65R15T XL	95	T				
		205/65R15T XL	99	T				
	70	205/70R15T	96	T				
		215/70R15T	98	T				
16	55	195/55R16T XL	91	T				
		205/55R16T XL	94	T				
		215/55R16T XL	97	T				
		225/55R16T XL	99	T				
	60	195/60R16T XL	93	T				
		205/60R16T XL	96	T				
		215/60R16T XL	99	T				

Inch	Series	Size	LI	SS	RR	Wet	PBN	Wave
16	60	225/60R16T XL	102	T				
		235/60R16T XL	104	T				
	65	205/65R16T XL	99	T				
		215/65R16T XL	102	T				
17	45	225/45R17T XL	94	T				
		235/45R17T XL	97	T				
		245/45R17T XL	99	T				
	50	205/50R17T XL	93	T				
		215/50R17T XL	95	T				
		225/50R17T XL	98	T				
	55	215/55R17T XL	98	T				
		225/55R17T XL	101	T				
18	60	235/55R17T XL	103	T				
	60	215/60R17T	100	T				
	65	215/65R17T	99	T				
	40	225/40R18T XL	92	T				
		235/40R18T XL	95	T				
		245/40R18T XL	97	T				
	45	225/45R18T XL	95	T				
		245/45R18T XL	100	T				
19	50	245/50R18T XL	104	T				
	35	255/35R19T XL	96	T				
	40	245/40R19T XL	98	T				
		255/40R19T XL	100	T				
	45	245/45R19T XL	102	T				





**Hankook Tire Europe GmbH**

Siemensstrasse 5A, 63263 Neu-Isenburg, Germany  
Tel : +49-(0)6102-8149-0 Fax : +49-(0)6102-8149-100

**[hankooktire.com](http://hankooktire.com)**

160216\_W616