



High Performance FABRICS AND COLOURS



TECHNICAL SPECIFICATIONS RH HIGH PERFORMANCE FABRICS AND COLOURS

NAME OF FABRIC	Ambla	Antistatic Synthetic Leather	Gaja Antistatic	Global ESD	Dolce	Intervene Plain	Intervene Texture	Valencia
Suppliers name	Ambla	Nevotex	Gabriel	Bogesunds	Spradling	Camira	Camira	Spradling
Code	(AMB)	(ESD)	(GJ)	(GL)	(DCE)	(ITVP)	(ITVT)	(VAN)
COMPOSITION								
Cotton	14							
Stainless steel			2	2				
Polyamide			4					
Polyester		15,5		8				18
Polyurethane					47			
Polyvinyl chloride	86	84,5						82
Rayon					53			
Recycled polyester						100	100	
Wool			94	90				
ENVIRONMENTAL								
EU Flower			♦					
ISO 14001 certified	♦		♦	♦		♦	♦	
Phthalate-free PVC								♦
FLAMMABILITY								
BS EN 1021-1:2006, ISO 8191-1 (cigarette)	♦	♦	♦	♦	♦	♦	♦	♦
BS EN 1021-2:2006, ISO 8191-2 (match)	♦		♦	♦	♦	♦	♦	♦
BS 7176:2007 Low Hazard						♦	♦	
BS 7176:2007 Medium Hazard	♦					♦	♦	
DIN 4102 B2								♦
UNI 9175 Classe 1 IM*						♦	♦	♦
BS 5852 Section 4 Crib 5	♦					♦	♦	
California 117					♦			
IMO A652 [16]	♦				♦			♦
FASTNESS TO RUBBING								
Dry		4-5	4-5			4	4	
Wet		4-5	4-5			4	4	
OTHER								
Weight (g/lin,m,+5%)	840	580	530	570	340	860	870	680
Width	137	140	140	150	137	140	140	137
Abrasion (Martindale)			50000	50000	>300000	100000	100000	>100000
Pilling			4,5					
Light fastness		≥6	5	5-7		6	6	
TECHNICAL PERFORMANCE								
Waterproof	♦	♦			♦	♦	♦	♦
Urine resistance					♦	♦	♦	♦
Stain repellent	♦					♦	♦	♦
Anti-bacterial	♦				♦	♦	♦	♦
Anti-fungal					♦	♦	♦	♦
Anti-microbial	♦				♦	♦	♦	♦
Breathable			♦	♦		♦	♦	
Antistatic		♦	♦	♦				
CLEANING & DISINFECTION								
Damp cloth w/clean water	♦	♦	♦	♦	♦	♦	♦	♦
Alcohol*	♦	♦			♦			♦
Disinfectant agents*	♦	♦	♦			♦	♦	♦
Dry Clean				♦				
Ph-neutral detergents			♦	♦				
Nadcc compatible	♦							
Bleach solutions*		♦			♦	♦	♦	♦

*CLEANING AND DISINFECTANTS

Cleaning and disinfectants may be used when diluted according to their manufacturers instructions. NB: After cleaning with alcohol or disinfectants it is important to clean with a damp cloth wrung out in lukewarm clean water to prevent the surface from drying out and cracking

MAINTENANCE

Vacuum regularly

FABRIC GUARANTEE

From 01.01.2010 RH offer a 10 year guarantee on all upholstery in our standard fabric and leather collections against material defects and manufacturing faults from date of production. The guarantee is valid for chairs subjected to normal use, defined as any regular working place and for a maximum of 9 hours per day. The guarantee covers all necessary replacement parts for repair. Labour and transportation costs are excluded. Normal wear and tear must be expected and is not covered by the guarantee.

Note: We reserve the right to alter technical specifications without notice.
Note: Flammability performance is dependent on foam used

HEAD OFFICE

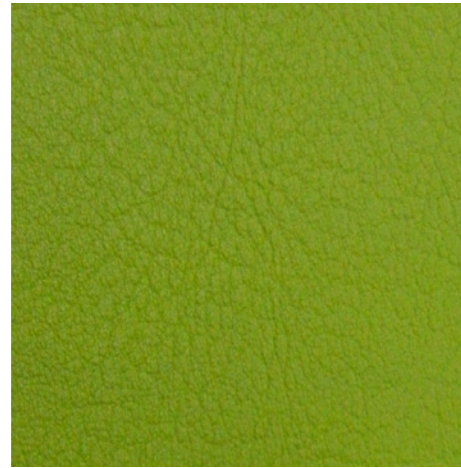
Scandinavian Business Seating AS
Fridtjof Nansens vei 12
P.O.Box 5055 Majorstuen
NO-0301 Oslo, Norway
Tel +47 22 59 59 00
Fax +47 22 59 59 59
www.sbseating.com

PRODUCTION

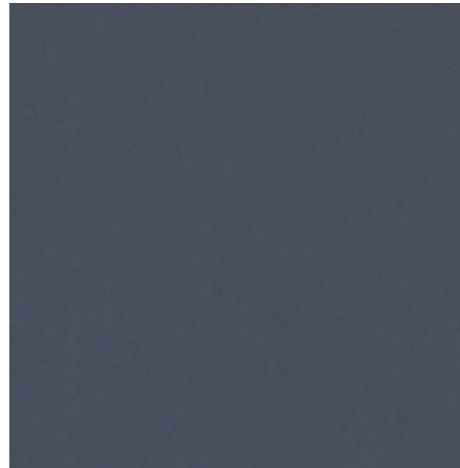
Vallgatan 1
Box 294
571 23 Nässjö, Sweden
Tel +46 380-55 53 00
Fax +46 380-182 85
www.rhchairs.com



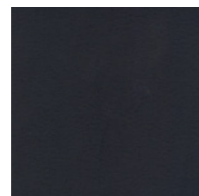
Healthcare / Industrial / Other heavy duty areas



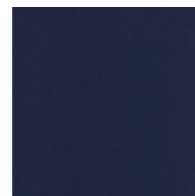
Valencia – **VAN5001**
Price group 3



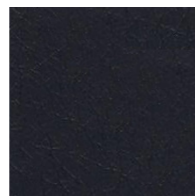
Dolce – **DCE6725**
Price group 4



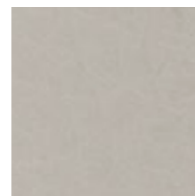
Valencia – **VAN9035**
Price group 3 (S)



Valencia – **VAN3068**
Price group 3



Dolce – **DCE6728**
Price group 4 (S)



Dolce – **DCE6726**
Price group 4



Valencia – **VAN2075**
Price group 3



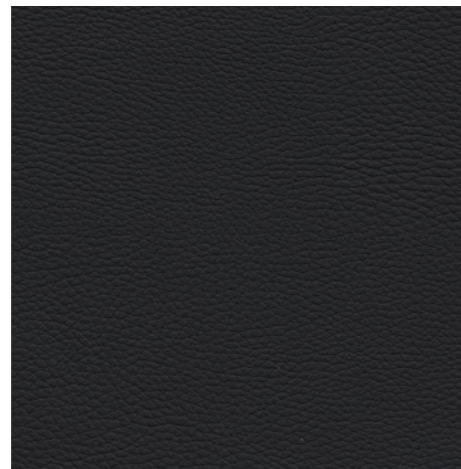
Valencia – **VAN4045**
Price group 3



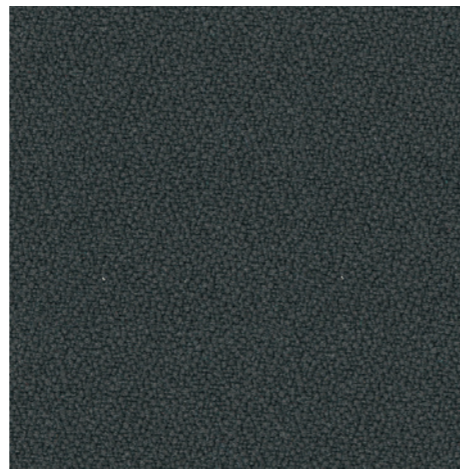
Dolce – **DCE6719**
Price group 4



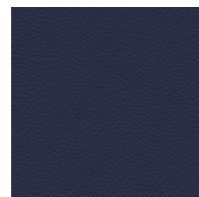
Dolce – **DCE6704**
Price group 4



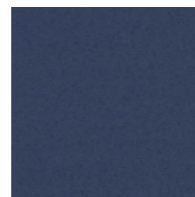
Ambla Exmoor – **AMB002**
Price group 4 (S)



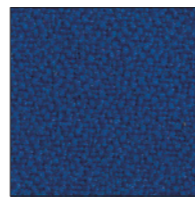
Intervene Plain¹⁾ – **ITVP046**
Price group 3 (S)



Ambla Exmoor
AMB004
Price group 4



Ambla Wild Heather
AMB700
Price group 4



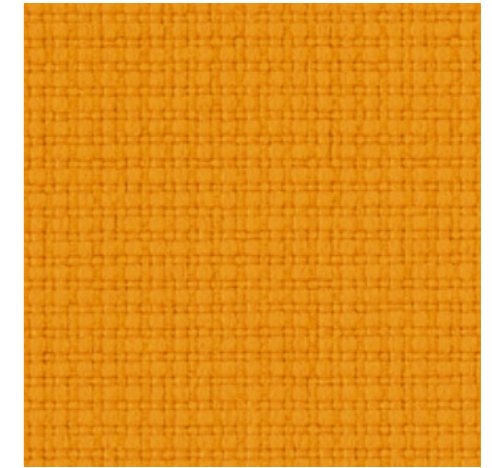
Intervene Plain¹⁾
ITVP100
Price group 3



Intervene Texture ¹⁾
ITVT079
Price group 3

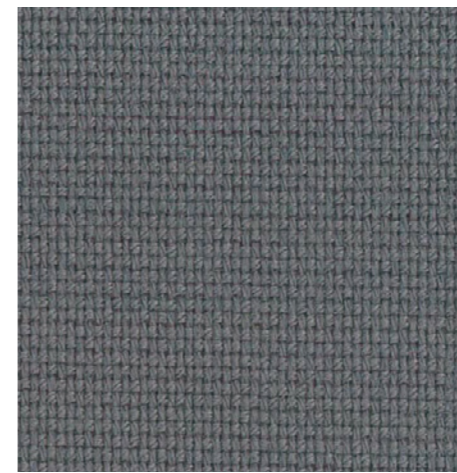


Intervene Texture ¹⁾
ITVT009
Price group 3 (S)



Intervene Texture ¹⁾ – **ITVT148**
Price group 3

ESD



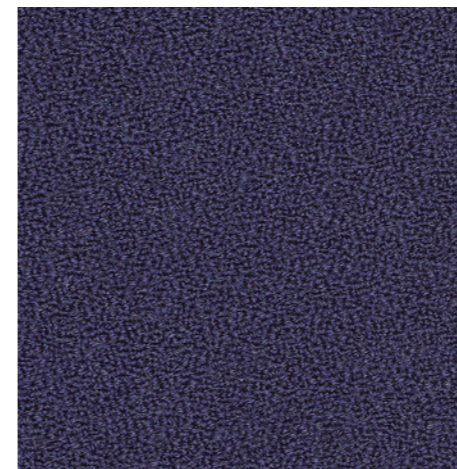
Global ESD – **GL161E**
Price group ESD (Price group 4 ²⁾)



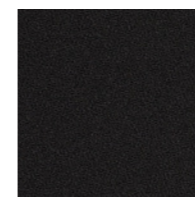
Global ESD – **GL191**
Price group ESD
(Price group 4 ²⁾) (S)



Global ESD – **GL153**
Price group ESD
(Price group 4 ²⁾)

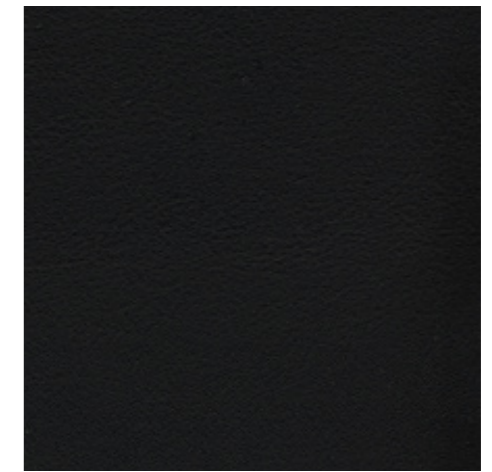


Gaja Antistatic – **GJ66005**
Price group ESD (Price group 4 ²⁾) (S)



Gaja Antistatic – **GJ60999**
Price group ESD (Price group 4 ²⁾) (S)

ESD Cleanroom / Cleanroom



Antistatic synthetic leather – **ESD001**
Price group ESD / ESD Cleanroom / Cleanroom
(Price group 3 ²⁾) (S)

(S) Standard delivery time.
NB. Please note that colours shown in the illustrations may vary from the actual colours.

¹⁾ For the RH Activ chair only.
²⁾ For non ESD, ESD Cleanroom or Cleanroom chairs.