



Softloader 3 User

Instruction manual and user's guide

This manual explains features and provides basic information about how to set up and operate the SL3 User, including instructions on how to install and use the SL3User. The manual also includes warnings and precautions for the safe and proper use of the product.



Warning

Important Notices regarding the use of Softloader 3

Warning: by using this Product you give your acceptance to the terms of license and warranty contained in the section Product Warranty and Software License.

To avoid electrical shock, do not open the case when the tool is connected. Refer any required servicing of product to Alientech Srl only.

The product and its accessories are for professional use only.

Important Notices regarding the contents of this guide

- Alientech Srl owns and administers some or all the rights to the images and other copyrighted content in this manual. Use of the images and other copyrighted content (including copying, reproducing, modifying, uploading on a network, displaying, transmitting, distributing, licensing, selling and publishing) except as used herein, is prohibited to the extent allowed by law.
- This guide and the screen images used throughout this guide are subject to change without notice.

Regulatory Information

- The marks are located on the rear side of the tool.
- The product meets the essential requirements of Regulation N.10 ECE.
- The product complies with Part 15 of the FCC Rules (47 CFR).
- The product is in conformity with FCC and ECE standards only if used with cables supplied and according to what specified in this user's guide.

Table of contents

Warning.....	2
Important Notices regarding the use of Softloader 3.....	2
Important Notices regarding the contents of this guide	2
Regulatory Information.....	2
Precautions	5
Safety.....	5
Use and handling.....	5
LCD Screen	6
WEEE Directive.....	6
Cleaning.....	6
Checking the package content.....	7
Product overview	8
Front side of the tool	8
Upper side of the tool	8
Using the menus	9
Main menu	9
Setup submenu	10
Diagnosis submenu	10
Preparation	11
Configuring Softloader 3 for use	11
How to select the language	11
How to set the screen brightness	11
How to rotate the screen 180°	11
How to calibrate the screen.....	11
How to display the information about your device	11
Operating Procedures	13
Reading the original file	13
Writing a modified file	13
Clearing DTC codes on your vehicle.....	13
Clearing DTC codes on another vehicle	13
File and Device Management	15
Installing SL3User software	15



Main window of the software.....	16
Downloading the original file.....	17
Uploading the modified file	17
Erasing data from your device	17
Downloading your LOG file	17
Displaying vehicles supported	18

Precautions

Before using this product, carefully read this manual and retain it for future reference.

Safety

This product has been designed with the highest concern for safety. However, any electrical device, if used improperly, has the potential for causing fire, electrical shock or personal injury. To help ensure accident-free operation, follow these guidelines:

- Observe all warnings, precautions and instructions.
- Stop use, unplug the USB cable from the PC and disconnect any other cables immediately if the device functions in an abnormal manner, produces unusual sounds or smells, or becomes too hot to touch.
- Never disassemble the product or accessories. Use the **Softloader 3** and accessories according to the instructions and guidelines provided in the user's guide. No authorization for the analysis or modification of the product, or the analysis or modification of the SL3User software, or the analysis of its circuit configuration, is provided. Disassembling will void the product warranty and may be dangerous

Use and handling

- Do not use the tool near water.
- Use only cables supplied by Alientech S.r.l., its subsidiaries and affiliates or by an authorized dealer.
- Do not expose the tool or accessories to high temperatures, high humidity, or direct sunlight.
- Do not leave the product or accessories in a car with the windows closed (particularly in summer).
- Do not expose the product or accessories to dust, smoke, or steam.
- Do not allow liquid or small particles to get into the product or accessories.
- Do not place the product or accessories on surfaces that are tilted, unstable or subject to vibration.
- Do not drop or step on the product or accessories, and do not subject the device to strong physical shock.
- Do not put heavy objects on the product or accessories.
- Do not touch or insert foreign objects into the connectors of the tool or accessories.

LCD Screen

- The LCD screen is made of glass and may crack if subjected to excessive force.
- Pixels that are not lit or are continuously lit may appear in certain locations on the LCD screen. The possible occurrence of such spots is a normal occurrence associated with LCD screens and is not a sign of a malfunction.
- Direct exposure to sunlight may damage the product's LCD screen.
- When using the product in a cold environment, you may notice shadows on the graphics or the screen may appear darker than usual. This is not a malfunction, and the screen will return to normal when the temperature goes up.

WEEE Directive



This symbol on the product or its packaging indicates that this product shall not be treated as household waste. In line with EU Directive 2002/96/EC for waste electrical and electronic equipment (WEEE), this product must not be disposed of as unsorted municipal waste. Please dispose of this product by returning it to the point of sale or to your local municipal collection point for recycling

Cleaning

- **Cleaning the exterior surface excluding the LCD screen:** Wipe gently with a soft cloth. Do not use solvents or other chemicals to clear the exterior surface of the Softloader 3.
- **Cleaning the LCD screen:** Wipe gently with a soft cloth.
- **Cleaning the connectors:** Do not use the product if the connectors are not clean. Remove the dirt with a dry cloth.

Checking the package content

The basic kit supplied with Softloader 3 includes:

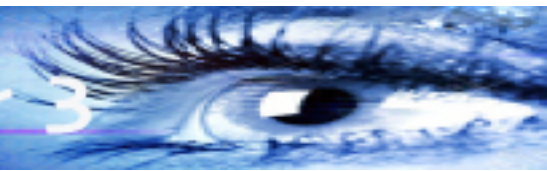
- Softloader 3 tool



- 1 USB cable
- OBDII cable

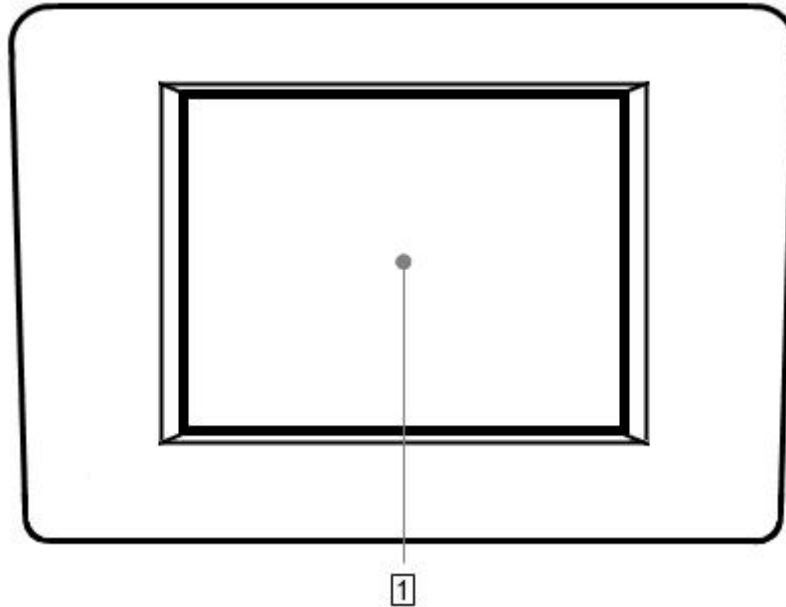
If any items are missing, contact info@ricaab.se providing your Customer Code.

Always keep the original packaging. In case of required servicing of the product, the tool must be returned with all accessories.



Product overview

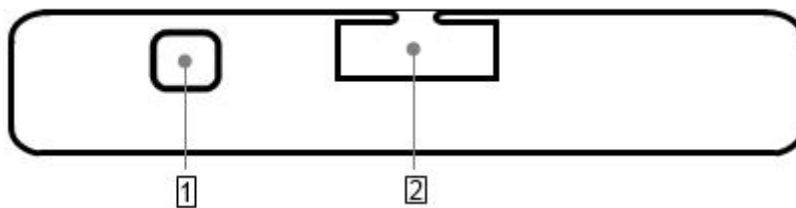
Front side of the tool



1 LCD Display

Touch screen display to use the software embedded in the tool.

Upper side of the tool



1 USB connector

Connect the tool to the computer.

2 Cable connector

Connect the cable supplied with the tool.

Using the menus

To use Softloader 3 you need to connect the tool to your vehicle using the OBDII cable supplied. You interact with Softloader 3 using your fingers to tap menu icons on the touch screen.

Use the navi



Main menu



Tuning: To select and read your vehicle the first time you use your Softloader 3, and write the modified file the next time.

Setup: To enter the Setup menu.

Diagnosis: To perform a diagnosis of the vehicle.

Information: To display the info about your device (for ex. Serial Number, Hardware and Software version) and, in case you've already read a vehicle, the info about the ECU.

Setup submenu



Back: To go back to Main menu.

Calibration: To calibrate the touch display.

Language: To set the language of the tool.

Feature: To set the backlight of the display and rotate the screen 180°.

Diagnosis submenu



Back: To go back to Main menu.

Vehicle list: To display the vehicle list and choose a vehicle other than yours to perform a diagnostic check and erase DTC codes.

EOBD: To perform a generic diagnostic check in Scan Tool mode. Function currently not available.

My vehicle: To perform a diagnostic check on your vehicle and erase DTC codes.




Preparation

Configuring Softloader 3 for use


How to select the language

1. Tap Setup.
2. Tap Language and select the language for the screen texts.
3. Go back to the Setup submenu using the navigation arrows.

How to set the screen brightness

1. Tap Setup.
2. Tap Feature.
3. Tap Brightness and then tap on the double arrows  to continue.
4. Increase or decrease the brightness of the screen until you get the brightness you desire.
5. Tap Yes to confirm or No to go back to the Setup submenu.

How to rotate the screen 180°

1. Tap Setup.
2. Tap Feature.
3. Tap Screen Rotation and then tap on the double arrows  to apply the change and go back to the Setup submenu.

How to calibrate the screen

1. Tap Setup.
2. Tap Calibration.
3. Tap on the box to calibrate, and repeat as the box moves.

How to display the information about your device

Tap Information to display the information about your device:



If you've already read a vehicle, in the next screen you can see the ECU info:








Operating Procedures

Reading the original file

To read the original file from your vehicle:

1. Tap on Tuning.
2. Select the Brand of your car and then tap on the double arrows  to continue.
3. Select the Model of your car and then tap on the double arrows  to continue.
4. Select the Version of your car and then tap on the double arrows  to continue.
5. Follow the onscreen instructions to read the stock original file from your vehicle.
(Stock file not present. Do you want to start the read operation?)
6. Use the SL3User software to download this file from your Softloader 3 and send it to files@ricaab.se (see section **File and Device Management** – [page 15](#)).


Writing a modified file

To write a modified file on your vehicle:

1. Upload the tuning file in your Softloader 3 using the SL3User (see section **File and Device Management** – [page 15](#)).
2. Tap on Tuning.
3. Follow the onscreen instructions to write the tuning file on your vehicle.

Notice: The file marked with * is the one currently stocked on the ECU.

Clearing DTC codes on your vehicle

1. Tap on Diagnosis.
2. Tap on My vehicle and then tap on the double arrows  to continue.
3. Follow the onscreen instructions.
4. If DTC codes are found, tap Yes if you want to delete them or No to go back to the Diagnosis submenu.

Clearing DTC codes on another vehicle

1. Tap on Diagnosis.
2. Tap on Vehicle List.



3. Select the Brand of your car and then tap on the double arrows → to continue.
4. Select the Model of your car and then tap on the double arrows → to continue.
5. Select the Version of your car and then tap on the double arrows → to continue.
6. Follow the onscreen instructions.
7. If DTC codes are found, tap Yes if you want to delete them or No to go back to the Diagnosis submenu.

File and Device Management

Installing SL3User software

1. Save the file SetupSL3User.exe received from your Decoder in a folder of your computer.

You may need to temporary disable your anti-virus or anti-spam software, in case it prevents the installation of drivers.

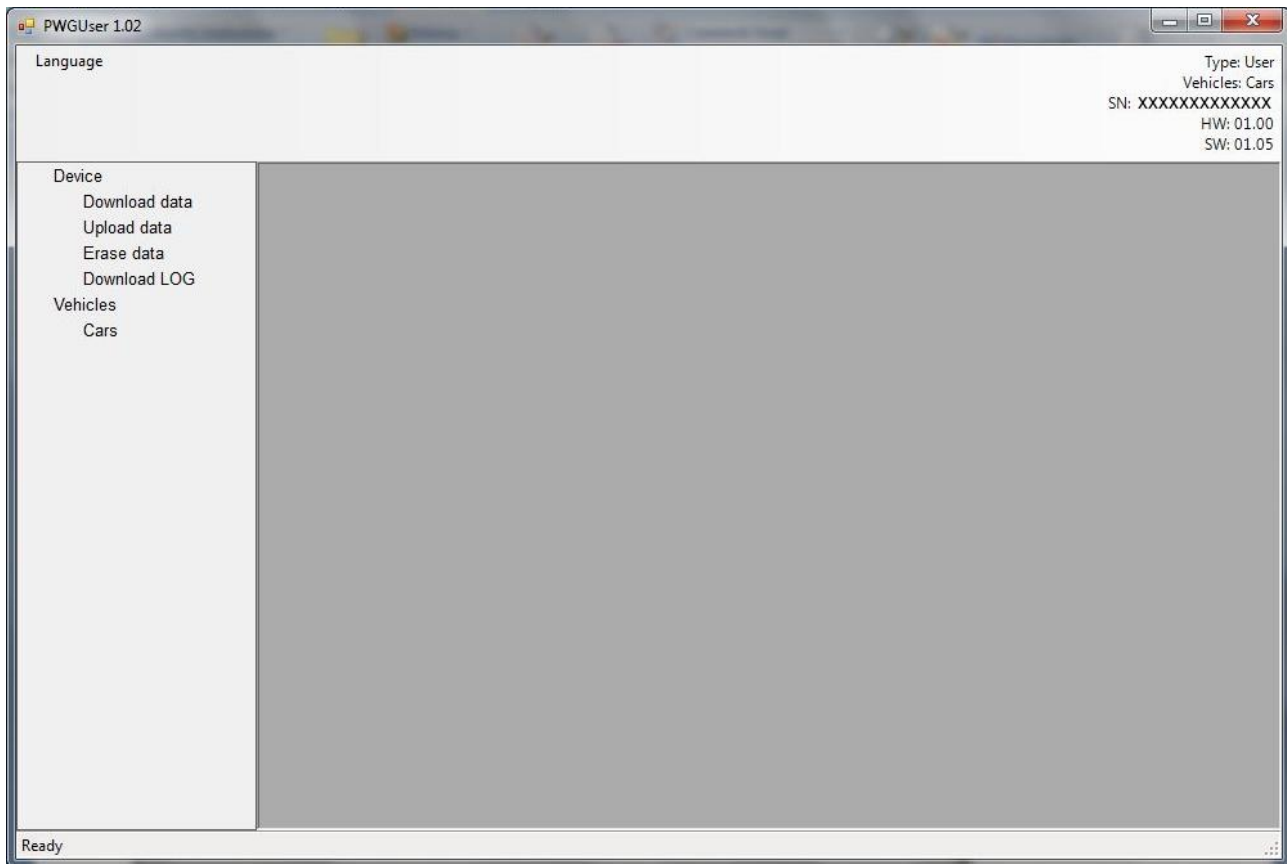
2. Double click the file SetupManager.exe to open the wizard and install the SL3User software.

Notice: When the security warning saying it is not possible to verify the authenticity of the software or drivers is displayed, please click on Install.

3. Follow the on-screen instructions and wait for the installation to complete.
4. Connect the Softloader 3 to your computer using the USB cable provided.

After the installation has completed, SL3User will start automatically.

Main window of the software



1 Device

Download data - To save on your computer the original file read from your vehicle.

Upload data - To save on your device the modified file(s) received from your Decoder.

Erase data - To.

Download LOG - To download the LOG with .

2 Vehicles

Cars - To display a complete list of all cars supported by Softloader 3.

To make best use of SL3User, we suggest you to hit the maximize button in the titlebar.



Downloading the original file

To download the stock original file read from your vehicle:

1. Click on **Download data**.
2. Click on Start.
3. Click on Browse to choose a folder where to save your file.

Uploading the modified file

To upload the modified file received from your Decoder in your Powerate3:

1. Click on **Upload data**.
2. Click on Start.
3. Click on Browse to select the folder where you saved the file received from your Decoder.

Erasing data from your device

To erase all data in your Powerate3 so that you can use it on another vehicle:

1. Click on **Erase data**.
2. Click on Start.

Notice: This operation is allowed only if you've restored the original file on your vehicle.

Downloading your LOG file

1. Click on Download LOG.
2. Click on Start to save the LOG file of your device on your computer.

Displaying vehicles supported

Click on Cars to display the list of all cars supported by Softloader 3.

You can filter the information as in Excel.

We remind you that an active Internet connection is needed to display the list.

Cars											Remove all filters
Manufact	Model	Version	Engine	Ty	Fuel	HI	ECU Man.	ECU Type	Pi		
Alfa Romeo	Mito		1300 JTD 1...		Diesel	90	MARELLI	MJD6F3		19	
Alfa Romeo	Mito		1300 JTD 1...		Diesel	95	MARELLI	MJ8DF		21	
Bmw	1 Series	(E81)	118d 2000 D	N47...	Diesel	143	BOSCH	EDC17 C06		32	
Bmw	1 Series	(E81)	120d 2000 D	N47...	Diesel	177	BOSCH	EDC17 CP02		32	
Bmw	1 Series	(E81)	123d 2000 D	N47...	Diesel	204	BOSCH	EDC17 CP02		32	
Bmw	1 Series	(E81)	130i 3000 24v	N52...	Petrol	265	SIEMENS	MSV70		36	
Bmw	1 Series	(E81)	116d 2000 D	N47...	Diesel	115	BOSCH	EDC17 C06		32	
Bmw	1 Series	(E82)	118d 2000 D	N47...	Diesel	143	BOSCH	EDC17 C06		32	
Bmw	1 Series	(E82)	120d 2000 D	N47...	Diesel	177	BOSCH	EDC17 CP02		32	
Bmw	1 Series	(E82)	123d 2000 D	N47...	Diesel	204	BOSCH	EDC17 CP02		32	
Bmw	1 Series	(E82)	125i 3000 24v	N52...	Petrol	218	BOSCH	MEV1746		30	
Bmw	1 Series	(E82)	128i 3000 24v	N52...	Petrol	230	BOSCH	MEV1746		30	
Bmw	1 Series	(E87)	118i 2000 16v	N46...	Petrol	129	BOSCH	MEV946		29	
Bmw	1 Series	(E87)	120i 2000 16v	N46...	Petrol	150	BOSCH	MEV946		29	
Bmw	1 Series	(E87)	118d 2000 D	M47	Diesel	122	BOSCH	EDC16 C36		26	

You can sort the content of the table by clicking on the column-title box.