

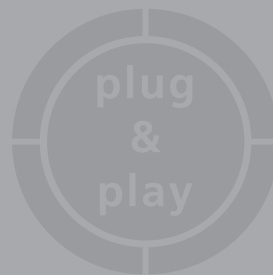


XIRIUM

DIGITAL WIRELESS AUDIO NETWORK



XIRIUM



DWA
DIGITAL WIRELESS AUDIO

NEUTRIK

“The sound quality with XIRIUM has been the same as it would have been over a cable.”

Pascal Lehner, Owner, Lehner Acoustik
www.lehner-akustik.com

“Xirium is a cable replacement and a real money saver - after only a few projects the investment for XIRIUM has been payed off.”

Peter Flückiger, Project Manager, tpc ag - technology and production center switzerland ag
www.tpcag.ch



XIRIUM

The Vision – the Technology – the Product

NEUTRIK – the vision

Neutrik, the worldwide leading supplier of professional entertainment connector products, establishes yet another milestone. Today, you can hardly imagine any stage, concert or public event without wireless applications. Therefore, Neutrik undertook intensive research looking into the subject of wireless audio data transmission.

DIWA – the technology

With DIWA (Digital Wireless Audio) Neutrik has developed a technology which stands for digital data transmission without data compression but provides high-level sound quality. Though wireless, the audio signals are transmitted by DIWA in cable quality. As a result no compromise from an audio point of view needs to be made in situations where no cable can be used.

The technical data proves this impressively: 24 bit / 48 kHz sampling, THD (total harmonic distortion) < 0.01% @ 1 kHz, SNR (signal-to-noise ratio) > 105 dB @ 1 kHz (dynamic) and last but not least a very short delay of 3 msec.

Choosing the 5 GHz frequency band eliminated the need for time-consuming approval processes and extensive channel management. A transmission and receiving protocol specifically developed for DIWA as well as patented error correction functions guarantee a robust and noiseless transmission of the data packet and best functionality.

The vision of a wireless transmission system between two connectors and to transmit audio signals in studio quality has been turned into reality by Neutrik with the help of the innovative DIWA technology and the product XIRIUM, a digital, wireless audio network.

XIRIUM – the product

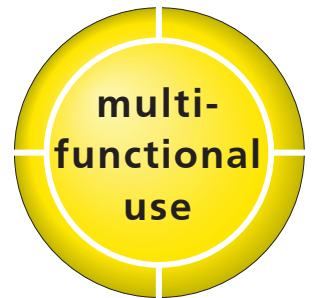
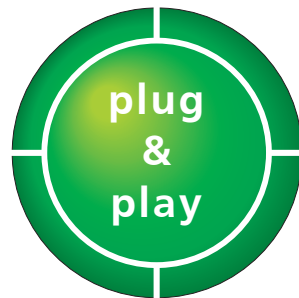
With the digital, wireless audio network XIRIUM, the first product based on the DIWA technology, Neutrik ventures a glimpse into the future. XIRIUM combines digital transmission and receiving lines in one system and delivers highest sound quality, unique reliability and ease of handling.

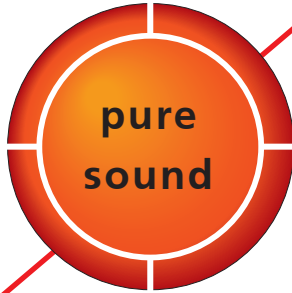
A 4 channel base unit (XIRIUM TRX) together with mobile transmission (XIRIUM TX) and receiving units (XIRIUM RX) give first access to the XIRIUM network. With an extension unit the network can easily be upgraded to a total of 8 channels. Allocation and the selection of input and output channels are flexibly configurable and allow the versatile use of the network.

The innovative DIWA technology together with the usability and easy handling of the XIRIUM products deliver a unique flexible package that eliminates time-consuming planning and set-up work.

XIRIUM

Eliminate cables keep pure sound





Crystal clear highs and full lows

Full frequency range

DIWA works on the 5 GHz band, this allows the transmission of the full frequency range of 20 – 20 kHz.

Sounds like a cable

No compression

With DIWA (Digital Wireless Audio) Neutrik has developed a technology which stands for digital data transmission without data compression but high-level sound quality.

Though wireless, the audio signals are transmitted by DIWA in cable quality.

Impressive technical data

DIWA provides 24 bit / 48 kHz sampling, THD (total harmonic distortion) < 0.01% @ 1 kHz, SNR (signal-to-noise ratio) > 105 dB @ 1 kHz (dynamic) and last but not least a very short delay of 3 msec.



XIRIUM used for measurement purposes

Crosby, Stills & Nash - Europe concert tour

“Just a quick email to let you know about the resounding success the XIRIUM system has been for us so far on the CSN tour. Measurements have been sped up drastically and the Xirium system has been very dependable and robust for our purposes. Thanks Kevin”

Kevin Madigan
www.crosbystillsnash.com

XIRIUM

Robust Transmission

Interference-free transmission

Additional channels

Working on 5 GHz XIRIUM adds wireless connectivity on top of existing UHF channels.

Channel occupation

The constant DIWA data stream avoids interference with users of the 5 GHz frequency band.



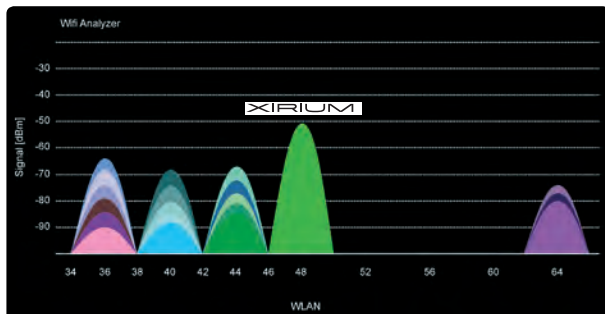
Secure operation

Data redundancy

The specifically developed and patented protocol transmits redundant data packages effectively providing robust forward error correction on top of antenna diversity.

Concealment algorithm

Loss of up to 17 data packages without audio skips, delays or drops.



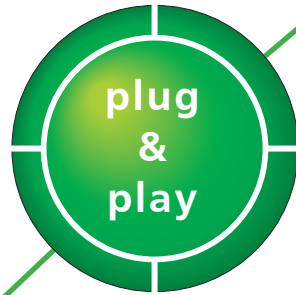
Robustness of XIRIUM confirmed in tough environment

POOLgroup - Mobile World Congress

„I was surprised that XIRIUM worked so perfectly in such an extreme environment and that a stable connection could be set up and kept up.“

Johannes Roesel, Director POOLsound
www.pool.de





Ready to use in seconds

Simple as a cable

The devices are linked with a push of a button and ready to go and the memory function allows quick future set-ups.

Hassle-free set-up

The licence-free automatic frequency management eliminates the need of channel request compared to conventional wireless UHF systems.

Saves time and money

Fast amortisation

The investment of XIRIUM pays off after a few projects.

Being a real cable replacement XIRIUM solves awkward and time-consuming cable runs.



XIRIUM is the perfect solution for all kinds of galleries and balconies

MDS PAtec - Sportfreunde Stiller in concert at BMW museum

“XIRIUM brought us ease of work thanks to omitted cable connections over two floors, time saving and thereby more time for other tasks.”

Marco Evert, MDS PAtec
www.mdspatec.com

Flexible audio network

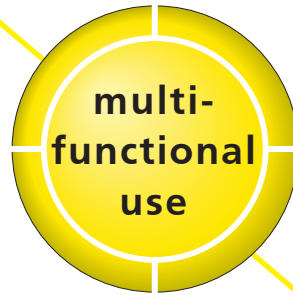
Easily adapted to your need

The XIRIUM network can run up to 8 transmitting or receiving audio channels or even 24 lines in broadcast mode.

Status information and remote control

Due to the exchange of control data, battery status and transmission quality can be monitored.

The XIRIUM configurator allows remote control of the devices.



The toolbox

Standard solution and problem solver

XIRIUM is the toolbox for awkward setup requirements and offers the flexibility to be used in whatever situation you may face.

No cabling through the audience seating area

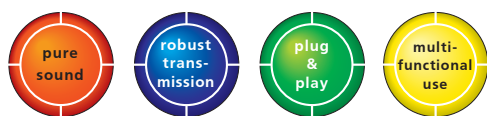
British Pageant for the LDS Church

“You made it work so successfully at the Pageant, that it stuck in my mind. This first impression of XIRIUM resulted in my SKY Sports enquiry. We’re using it ourselves now and it’s all good!!”

Davie Dion, VME
owner and SKY Senior Television Sound Supervisor

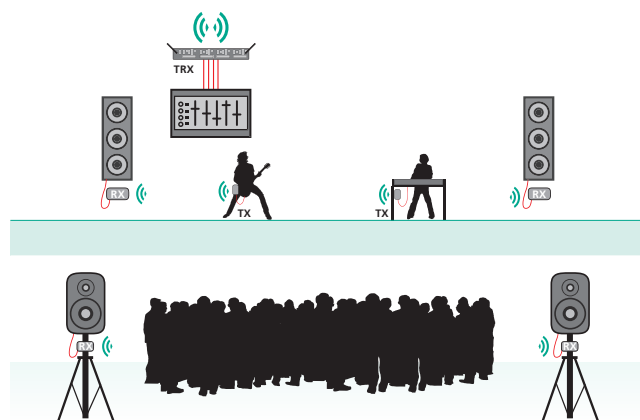


Stage



Quick set-up and reliable operation

Highest reliability yet facilitating rapid set-up and dismantling – this is the fundamental concept of XIRIUM. Conventional signal sources as well as active loudspeakers can be integrated in the set-up without complex wiring.



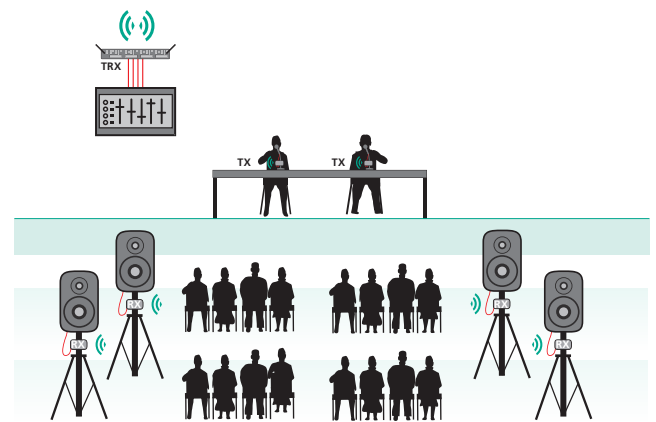
TX – Send RX – Receive

Conference



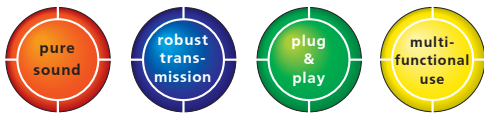
Easy to use and flexible application

Whether a conference, election event or a presentation, the XIRIUM network allows the successful operation of many applications without time-consuming technical planning and set-up work. The flexibility of the system is unique and enables swift and efficient set-ups without complex wiring.



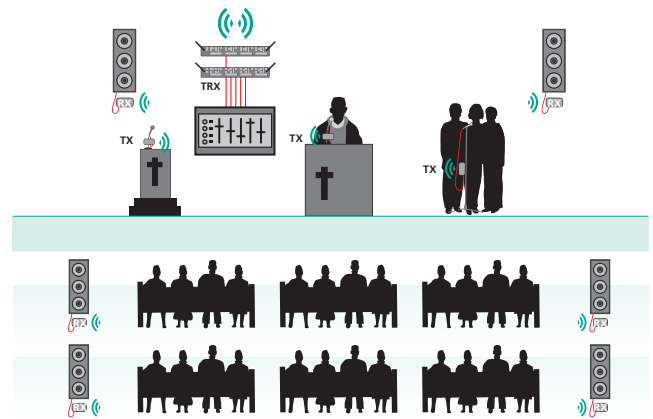
TX – Send RX – Receive

Church



Inconspicuous and yet efficient

In churches or historical buildings post-wiring of an audio system is often not possible or only possible after considerable time-consuming technical effort. In such cases XIRIUM impresses not only with its concept but allows also the integration of microphones and loudspeakers in one system, which is both, easy to handle and efficient.



Customer Feedback

“The design of the XIRIUM is absolutely suitable for the rental business. It has more than convinced us and we are confident that it will have a future in the rental business where there will be sufficient fields of application.”

Jörg Birrfelder, Technical Director
www.mediarent.ch

“Thanks for the transmission. Good job, good system.”

Bruce Odland
bruceodland.net

“I was very pleased with the performance of XIRIUM during the live broadcast on SKY Sports of the recent Rugby Super League match.”

Davie Dion, VME
owner and SKY Senior Television Sound Supervisor

“Three complex and extremely long distance connections were realized with XIRIUM. The system worked instantly and is a real plug and play solution.”

René Gnann, Owner, LIGHT & SOUND PROJECT
www.light-sound.ch

“One of our goals was to provide a 100 % trip-proof and wheelchair-accessible audience area which we attained with the help of XIRIUM.”

Marco Scandola, CEO
www.scandola.ch

XIRIUM

System Components

TRX 

NX4TRX Base station



TX 

NX1TX (transmit)



RX 

NX1RX (receive)



TX-T 

NX1TX-T (transmit)



RX-T 

NX1RX-T (receive)



NXM-20



NXM-35



NKX-MS



NPS-*



NXA-3-360 (Spare parts)

NEW



NXA-10-360-10



NKXA*

NEW



NXBP-T-6

NEW



NXUC-M-15



NXA-*-60/40*



Example of mounting

Ordering Information

Ordering Information

| Type No. | Description | Consisting of |
|---------------------------------|-------------------------------|---|
| XIRIUM System Components | | |
| NX4TRX | XIRIUM Base Station 4CH | 19" access point, 2 rod antennas, power supply, mounting hardware |
| NX1TX | XIRIUM Remote Transmitter TX | Remote unit, power supply USB |
| NX1RX | XIRIUM Remote Receiver RX | Remote unit, power supply USB |
| NX1TX-T | XIRIUM Touring Transmitter TX | Remote unit, power supply MiniXLR, 1 rod antenna |
| NX1RX-T | XIRIUM Touring Receiver RX | Remote unit, power supply MiniXLR, 1 rod antenna |

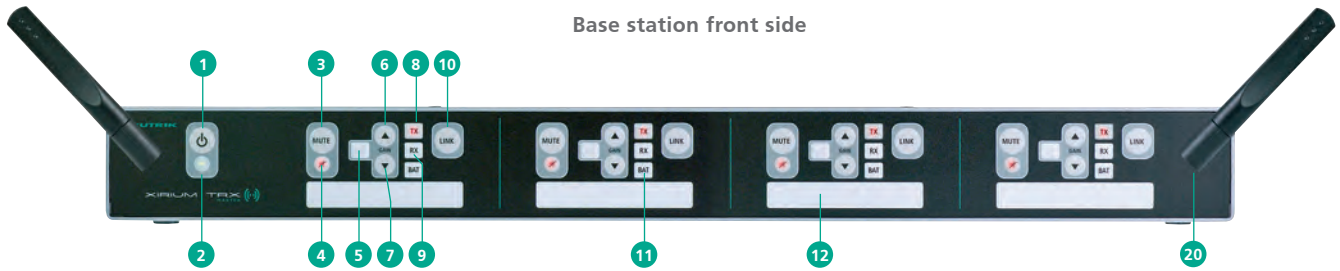
Accessories

| | | |
|----------------------|--|--------------------------------|
| NXM-20 | 20 mm stand holder for remote unit | |
| NXM-35 | 35 mm stand holder for remote unit | |
| NKX-MS | Master / Slave link cable | |
| NXA-10-60-55 | 5 GHz Antenna 10 dBi 60°H 55°V | Antenna and cable combinations |
| NXA-14-40-35 | 5 GHz Antenna 14 dBi 40°H 35°V | see table below. |
| NXA-3-360 | 5 GHz Antenna 3 dBi Omnidirectional (Spare parts) | |
| NXA-10-360-10 | 5 GHz Antenna 10 dBi, 360°H 10°V, including mounting accessories for NXUC-M-15 | |
| NKXA-4.5 | Antenna cable RG142, SMA, 4.5 m | |
| NKXA-8 | Antenna cable S04162B, SMA, 8 m | |
| NKXA-12 | Antenna cable S04262B, SMA, 12 m | |
| NKXA-15 | Antenna cable S04162B, SMA, 15 m | |
| NXBP-T-6 | Battery Pack including power supply, cables and mounting accessories for NXUL-M-15 | |
| NXUC-M-15 | Manfrotto universal mounting clamp | |
| NPS-10W | Power supply Micro USB 5 V / 2 A | |
| NPS-10W-T | Power supply XLR Tiny 5 V / 2 A | |
| NPS-24W | Power supply XLR 12 V / 2 A | |
| CAS-NX-ALU | Xirium aluminium case | |

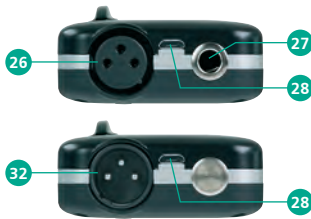
Recommended combinations of antenna and cable

| Antenna Type | | NXA-10-60-55 | NXA-10-360-10 | NXA-14-40-35 |
|--------------|------------------|--------------|---------------|--------------|
| Cable Type | Cable length (m) | | | |
| NKXA-4.5 | 4.5 | ● | ● | - |
| NKXA-8 | 8 | ● | ● | - |
| NKXA-12 | 12 | - | - | ● |
| NKXA-15 | 15 | - | - | ● |

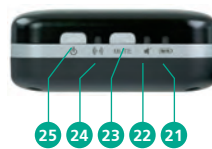
Technical Information



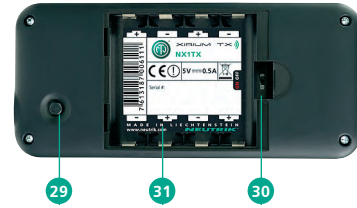
TX and RX remote unit bottom side



TX and RX remote unit front side



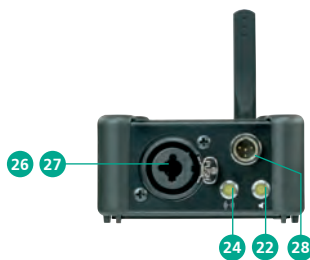
TX and RX remote unit rear side



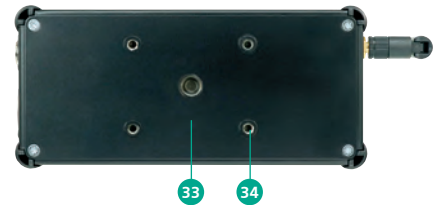
RX Touring remote unit front side



TX Touring remote unit front side



RX / TX Touring rear side



TX Touring unit rear side



| Operating element | Function | | |
|------------------------|--|------------------|------------------------------------|
| 1 Power key | Powers the unit on / off | 32 XLR male OUT | Output to destination audio device |
| 2 Power LED | Indicates powered unit | 33 Mounting bore | M10 mounting bore |
| 3 Mute key | Switches muting on / off | 34 Mounting bore | M6 mounting bore |
| 4 Mute LED | Indicates mute status | | |
| 5 Gain LED | Indicates gain level | | |
| 6 Gain Up key | Increases the gain in 8 dB steps | | |
| 7 Gain Down key | Reduces the gain in 8 dB steps | | |
| 8 TX Link LED | Indicates association to TX unit | | |
| 9 RX Link LED | Indicates association to RX unit | | |
| 10 Link key | Starts association process. Press short to see associated remote unit. | | |
| 11 Battery LED | Indicates battery life of associated remote unit. | | |
| 12 Title block | Labelling and marking | | |
| 13 Link switch | Connects adjacent audio channels | | |
| 14 XLR male OUT | Electrically balanced XLR output | | |
| 15 XLR Combo IN | Accepts balanced XLR or TRS input | | |
| 16 Reset switch | Reset base station to factory default | | |
| 17 RJ45 connector | Connects to computer for remote software operation | | |
| 18 M / S connector | Interconnects two base stations (Master/Slave) | | |
| 19 Power supply | DC power input 12V, 1A | | |
| 20 Antenna connector | Connects antennas | | |
| 21 Battery LED | Indicates battery life | | |
| 22 Mute LED | Indicates mute and phantom power / Hi-Z status | | |
| 23 Mute key | Switches muting on / off | | |
| 24 Link LED | Indicates association status | | |
| 25 Power key | Powers the unit on / off and starts the association process. Press quickly to see associated channel on the base station | | |
| 26 XLR female IN | Accepts balanced XLR input | | |
| 27 TRS 1/4" IN | Accepts balanced (TRS) or unbalanced (TS) input | | |
| 28 DC power input | Accepts DC power adapter | | |
| 29 XLR lock button | Press to remove XLR cable | | |
| 30 Phantom HI-Z switch | Switches phantom power on and activates 1/4" connector HI-Z | | |
| 31 Battery holder | Allows insertion of 4 AA batteries | | |

Technical Information

XIRIUM – Specifications

| General specifications | |
|--|--|
| Radio frequency carrier range | IEEE 802.11a, 5.15-5.25 GHz, channels 36-48, licence-free |
| Data protocol | proprietary (DIWA technology) |
| Transmit power | ETSI compliant |
| Range | Typically 30 m line of sight, up to 300 m point to point Longer range depending on obstacles, reflexions, interferences |
| Audio Performance (analog to analog per wireless link) | |
| THD + Noise (TX Gain = min.) | < 0.01 % @ 1 kHz, 4 dBu < 0.05 % @ 20 Hz – 10 kHz, 4 dBu |
| Frequency Response | +0.5 dB / -1.5 dB @ 20 Hz – 20 kHz ref. 1 kHz |
| Dynamic Range | > 105 dB @ 1 kHz, A-weighted |
| Crosstalk | < -90 dB @ 20 kHz |
| Number of audio channels | 4 per TRX unit, max. 8 with two linked TRX units |
| Broadcast mode (RX only) | 3 per audio channel (12 per TRX unit) |
| Converter Resolution (AD & DA) | 24 bit |
| Sampling Rate | 48 kHz |
| Latency (Delay) | 3.4 msec |
| Transmission method | Compression-free, no reduction of converted data |
| Operating Temperature | 0 °C to +50 °C |
| Storage Temperature | -20 °C to +80 °C |

TRX specific characteristics

| Antenna | 2 x 1/2 wave dipole with SMA male connectors | | | | |
|------------------------------|--|--|----------------|-------------------|----------------------------------|
| Diversity | Antenna diversity | | | | |
| Number of audio channels | 4 per unit | | | | |
| Analog Input / Output specs: | | | | | |
| In- / Output Type | Impedance kΩ | Rated Source / Load kΩ | Nominal dBu | Max. Level dBu | Connector type |
| Line Input (balanced) | 28 | 1 | +4 | +22 | Combo XLR / TRS |
| Line Output (balanced) | 0.8 | 10 | +4 | +22 | XLR |
| Indicators | LEDs: | Mute status, transmission quality level, TX/RX mode, remote battery status | | | |
| Controls | Front panel: | On / Off, Mute, TX remote audio gain, Link / Show associated channels | | | |
| | Rear panel: | Reset, adjacent audio channel links | | | |
| Interface ports | Remote | Host connection via UDP / IP protocol Master / Slave link between TRX units | | | etherCON RJ45 12 pole miniCON |
| Power Supply | 12 V dc | | | | |
| Max. Current Draw | 610 mA | | | | |
| Dimensions (w x h x d) | 432 mm x 46 mm x 237 mm, without protruding antennas | | | | |
| Weight | 3.2 kg | | | | |

| TX specific characteristics | | | | | | | |
|--------------------------------|---|--|--------------|--------|------------|---------|-----------|
| Number of audio channels | 1 | | | | | | |
| Remote controlled preamp gain | 8 dB steps via TRX frontpanel, 1 dB steps via TRX Remote Software | | | | | | |
| Phantom Power (when activated) | 48 V dc / 7 mA | | | | | | |
| Analog Input specs: | | | | | | | |
| Input Mode | Input Level | | | | | | |
| | Input Imp. | Rated Source Imp. | Sensitivity* | Max.** | Gain | Phantom | Connector |
| | kOhm | Ohm | dBu | dBu | dB | Switch | type |
| Line (balanced) | 10 | 1000 | -36 | +22 | 0..40 | | XLR, TRS |
| Mic (balanced) | 2.5 | 200 | -68 | +1 | 21..72 | | XLR, TRS |
| Mic Phantom Power (balanced) | 2.1 | 200 | -68 | +10 | 12, 20..72 | X | XLR |
| Hi-Z (unbalanced) | 2200 | 150000 | -50 | +8 | 10, 18..54 | X | TRS |
| Indicators | LEDs: | Mute status, transmission quality level, TX/RX mode, remote battery status | | | | | |
| Controls | On / Off / Show-channel, Mute, Phantom / Hi-Z enable switch | | | | | | |
| Power Supply | 4 x 1.2 V (AA) rechargeable batteries (recommended), optional 4 x 1.5 V (AA) / 5 V DC / 2 A via Micro-USB connector | | | | | | |
| Continuous operation time | Typically 5.5 h @ rechargeable batteries 2500 mAh (SANYO Eneloop XXX) | | | | | | |
| Dimensions (w x h x d) | 138 mm x 62 mm x 25 mm (excluding antenna fin) | | | | | | |
| Weight | 120 g | | | | | | |

| TX-T specific characteristics | | | | | | | |
|--------------------------------|---|---|--------------|--------|------------|---------|----------------|
| Antenna | 1 x 1/2 wave dipole with SMA male connectors | | | | | | |
| Number of audio channels | 1 | | | | | | |
| Remote controlled preamp gain | 8 dB steps via TRX frontpanel, 1 dB steps via TRX Remote Software | | | | | | |
| Phantom Power (when activated) | 48 V dc / 7 mA | | | | | | |
| Analog Input specs: | | | | | | | |
| Input Mode | Input Level | | | | | | |
| | Input Imp. | Rated Source Imp. | Sensitivity* | Max.** | Gain | Phantom | Connector |
| | kOhm | Ohm | dBu | dBu | dB | Switch | type |
| Line (balanced) | 10 | 1000 | -36 | +22 | 0..40 | | Combo XLR, TRS |
| Mic (balanced) | 2.5 | 200 | -68 | +1 | 21..72 | | Combo XLR, TRS |
| Mic Phantom Power (balanced) | 2.1 | 200 | -68 | +10 | 12, 20..72 | X | Combo XLR |
| Hi-Z (unbalanced) | 2200 | 150000 | -50 | +8 | 10, 18..54 | X | Combo TRS |
| Indicators | LEDs: | transmission quality, Mute/Phantom power (blinking)/Hi-Z (permanent) status | | | | | |
| Controls | Phantom / Hi-Z enable switch | | | | | | |
| Power Supply | 5 V DC / 2 A via Mini-XLR connector (4 pole male) | | | | | | |
| Dimensions (w x h x d) | 168 mm x 78 mm x 41 mm (excluding antenna) | | | | | | |
| Weight | 400 g | | | | | | |
| Optional Accessories | Antenna + cable extension (see page 4) | | | | | | |

Technical Information

| RX specific characteristics | | | | | |
|-----------------------------|---|----------------------------------|--------------------|------------------------------------|-----------------------|
| Number of audio channels | 1 | | | | |
| Analog Output specs: | | | | | |
| Output Type | | | | | |
| | Output Imp. Ohm | Rated Load Imp. Load kOhm | Nominal dBu | Output Level Max. Level dBu | Connector type |
| Line Output (balanced) | 800 | 10 | -2 | +16 | XLR |
| Indicators | LEDs: transmission quality, Mute and Battery status | | | | |
| Controls | On / Off / Show-channel, Mute | | | | |
| Power Supply | 4 x 1.2 V (AA) rechargeable batteries (recommended), optional 4 x 1.5 V (AA) / 5 V DC / 2 A via Micro-USB connector | | | | |
| Continuous operation time | typically 5.5 h @ rechargeable batteries 2500 mAh (SANYO Eneloop XXX) | | | | |
| Dimensions (w x h x d) | 138 mm x 62 mm x 25 mm, excluding antenna fin | | | | |
| Weight | 110 g | | | | |

| RX-T specific characteristics | | | | | |
|-------------------------------|--|----------------------------------|--------------------|------------------------------------|-----------------------|
| Antenna | 1 x 1/2 wave dipole with SMA male connectors | | | | |
| Number of audio channels | 1 | | | | |
| Analog Output specs: | | | | | |
| Output Type | | | | | |
| | Output Imp. Ohm | Rated Load Imp. Load kOhm | Nominal dBu | Output Level Max. Level dBu | Connector type |
| Line Output (balanced) | 800 | 10 | -2 | +16 | XLR |
| Indicators | LEDs: transmission quality, Mute status | | | | |
| Power Supply | 5 V DC / 2 A via Mini-XLR connector (4 pole) | | | | |
| Dimensions (w x h x d) | 168 mm x 78 mm x 41 mm, excluding antenna | | | | |
| Weight | 400 g | | | | |
| Optional Accessory | antenna + cable extension (see below) | | | | |

| Optional Antennas – Linear polarised directional WI-FI antenna | | | |
|--|------------------|-----------------------|------------------|
| Frequency band: 5.150 GHz - 5.875 GHz | | | |
| Type | NXA-10-60-55 | NXA-10-360-10 | NXA-14-40-35 |
| Gain | 10 dBi | 10 dBi | 14 dBi |
| Beam width horizontal | 60° | 360° | 40° |
| Beam width vertical | 55° | 10° | 35° |
| Connector | SMA jack | N incl. SMA connector | SMA jack |
| Dimension (mm) | 101 x 80 x 20 | 24 x 630 | 101 x 80 x 35 |
| Weight | 0.13 kg | 0.20 kg | 0.11 kg |
| Operating temperature | -40° C to +80° C | -40° C to +80° C | -40° C to +80° C |

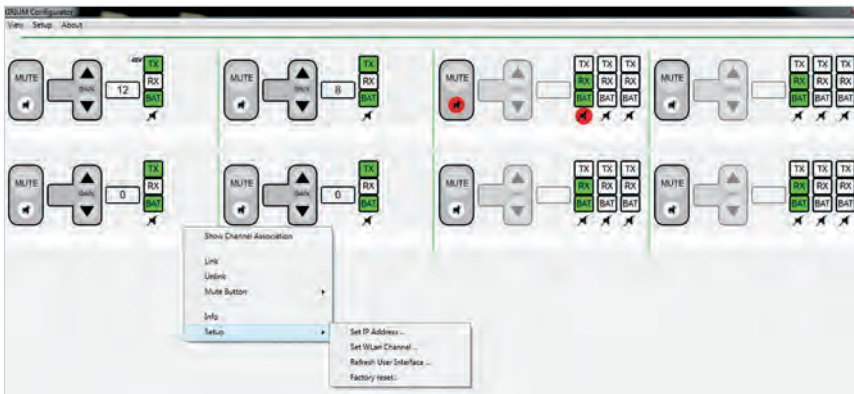
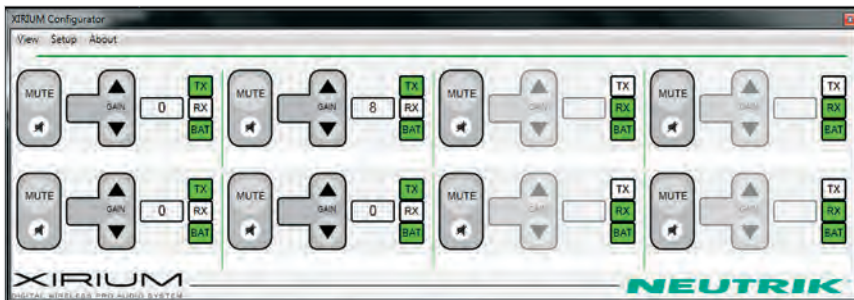
*: Sensitivity corresponds to value where a nominal output voltage is achieved at maximum gain setting.
 **: Maximum input level corresponds to value where almost signal clipping occurs at minimum gain setting.
 0 dBu = 0.775 V rms

XIRIUM Configurator

The XIRIUM Configurator software (Windows only) allows the optional use and configuration of XIRIUM systems via a graphical user interface.

| | |
|--------------------------------|--|
| Configuration: | Set up of transmission and receiving channels (link and unlink TX / RX units) Fine adjustment of gain in 1dB steps |
| Advanced configuration: | IP address assignment WLAN channel selection |
| Operation: | ON / OFF Mute Gain adjustment |

XIRIUM Configurator: Screenshot examples



Free Download of XIRIUM Configurator Software and Manual on the Web “www.neutrik.com” section “XIRIUM”.





“We were amazed by the performance of the system.”

Stage Electrics
www.stage-electrics.co.uk

“I was thrilled and relieved as I witnessed the quick setup and easy operation of XIRIUM.”

Matthias Pohl, freelancer at SOUNDHOUSE
www.k-o-h-l.com

Liechtenstein (Headquarters)

NEUTRIK AG, Im alten Riet 143, 9494 Schaan
T +423 237 24 24, F +423 232 53 93, neutrik@neutrik.com

Germany / Netherlands / Denmark / Austria

Neutrik Vertriebs GmbH, Felix-Wankel-Strasse 1, 85221 Dachau, Germany
T +49 8131 28 08 90, info@neutrik.de

Great Britain

Neutrik (UK) Ltd., Westridge Business Park, Cothey Way
Ryde, Isle of Wight PO33 1 QT
T +44 1983 811 441, sales@neutrik.co.uk

France

Neutrik France SARL, Rue du Parchamp 13, 92100 Boulogne-Billancourt
T +33 1 41 31 67 50, info@neutrik.fr

USA

Neutrik USA Inc., 4115 Taggart Creek Road, Charlotte, North Carolina, 28208
T +1 704 972 30 50, info@neutrikusa.com

Japan

Neutrik Limited, Yusen-Higashinohonbashi-Ekimaie Bldg., 3-7-19
Higashinohonbashi, Chuo-ku, Tokyo 103
T +81 3 3663 47 33, mail@neutrik.co.jp

Hong Kong

Neutrik Hong Kong LTD., Suite 18, 7th Floor Shatin Galleria
Fotan, Shatin
T +852 2687 6055, neutrik@neutrik.com.hk

China

Ningbo Neutrik Trading Co., Ltd., Shiqi Street, Yinxian Road West
Fengjia Villiage, Yinzhou Area, Ningbo, Zhejiang; 315153
T +86 574 88250488 800, neutrik@neutrik.com.cn

India

Neutrik India Pvt. Ltd., Level 3, Neo Vikram, New Link Road,
Above Audi Show Room, Andheri West, Mumbai, 400058
T +91 982 05 43 424, anklesaria@neutrik.com

Associated companies

Contrik AG

Steinackerstrasse 35, 8902 Urdorf, Switzerland
T +41 44 736 50 10, contrik@contrik.ch

H. Adam GmbH

Felix-Wankel-Straße 1, 85221 Dachau, Germany
T +49 08131 28 08-0, info@adam-gmbh.de



www.neutrik.com
www.experience-neutrik.com